



YOUR LIQUID STORAGE SOLUTION PARTNERS

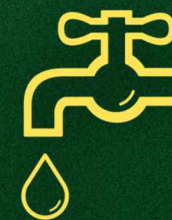


Tuffa UK Limited,
Dovefields Industrial Estate,
Derby Road,
Uttoxeter,
Staffordshire,
ST14 8SW

Tel: +44 (0)1889 567 700
Fax: +44 (0)1889 567 600
Email: sales@tuffa.co.uk
www.tuffa.co.uk



**OIL
TANKS**



**WATER
TANKS**



**CHEMICAL
TANKS**



**BESPOKE
PRODUCTS**

OUR FAMILY OF PRODUCTS

Tanks for all your liquid storage needs...



06 Bunded Oil Tanks

Tuffa Bunded Oil Tanks are available in a variety of capacities from 1350 litres to 15000 litres and are manufactured to exceed all current regulations.



08 Bunded Fire Protected Tanks

The 'Tuffa FireStop'; Tuffa's Fire Protected Tanks are designed with a 'fire barrier' to protect oil tanks where fire protection is necessary. The fire barrier is constructed from a high quality fire retardant material and the innovative FireStop tank is the only one of its kind on the market.



12 Bunded Fuel Dispensing Tanks

Tuffa Fuel Stations are specifically designed for fuel dispensing. They are available in 1350-15000 litre capacities and ensure that you meet all current fuel storage regulations.



14 Multi Compartment Tanks

Tuffa Multi Compartment Tank range is an innovative design concept that includes two, three or more compartments within one bund to provide one single tank unit, as opposed to multiple, suitable for storing two or more different types of liquids. They are convenient for filling, space saving on a communal base and each product can be separately dispensed and monitored. A major plus is the cost saving as there is no need to purchase separate tanks.



16 Waste Oil Storage

Tuffa Waste Oil Tanks have been engineered for the safe, secure and environmentally responsible storage of waste oils, and come in a variety of capacities from 1350 litres to 15000 litres.



17 Single Skin Tanks

Tuffa Single Skin Tanks are specifically designed to suit domestic applications where bunding is not a legal requirement, and are available in various sizes and shapes to suit your requirements.



18 Water Tanks

Tuffa provide a vast range of water storage solutions for domestic, agricultural, industrial and commercial premises to exceed the most demanding technical and regulatory requirements.



22 Molasses Tanks

Single skin plastic tanks available in a range of sizes from 1350 litres to 20000 litres that are designed to suit the storage of molasses.



24 AdBlue Storage & Dispensing Tanks

Tuffa UK Ltd provides a range of easy to handle above ground AdBlue Storage and Dispensing Tanks for Agricultural and Commercial companies. The chemical characteristics of AdBlue require special storage and handling equipment, for which Tuffa Tanks are the ideal solution.



26 Chemical Storage

All Tuffa Chemical Tanks are subject to the highest and best Quality Check (QC) procedures ensuring constant high quality products. Chemical storage tanks are designed, manufactured and tested in-house at our works in Uttroter and these bulk storage containers are suitable for a variety of chemical and water treatment applications.



30 Steel Products

Our steel tanks are available in a range of colours, capacities and thicknesses. They are manufactured to your specification including critical dimensions, and for all applications including domestic, agricultural, industrial and commercial.



34 Petrol Tanks

These tanks are the only UK manufactured, above ground petrol storage systems of their kind. Suitable for any Industry, including Tool Hire Shops, Scrap yards, Race courses, Golf clubs, Forestry, Sailing Clubs, Marine services, Yacht clubs, Construction, Allotments, Fire Service, Sports centre, Colleges, Schools, Farms, Country Estate/Gardens, Local Authorities, Factory's, Police Stations, Car dealerships, Outdoor pursuits + many others.



36 Bespoke Products

Not only are Tuffa Tanks a manufacturer of tanks suitable for all types of liquid storage, they can be used for a variety of non-liquid applications. The TUFFA range of products is quite diverse which sets it apart from its competitors as we can manufacture bespoke items to clients specifications, and offer technical support and advice to all customers.



38 FMS

The Tuffa FMS unit combines innovative design and meticulous function to give a robust and reliable liquid level monitoring system. Its high accuracy readings will give the user a clear picture of the tanks contents and its GSM technology allows you to check your tank level anywhere or even alert the owner of a theft.



39 Accessories

From automatic shut-off nozzles, pumps, filters, hoses, gauges, flowmeters and much more, Tuffa provide you with only the most premium quality parts.



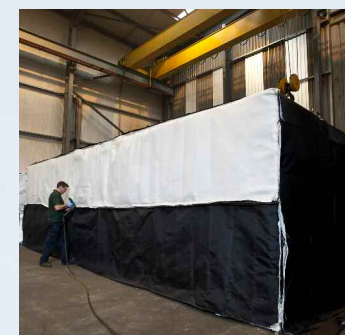
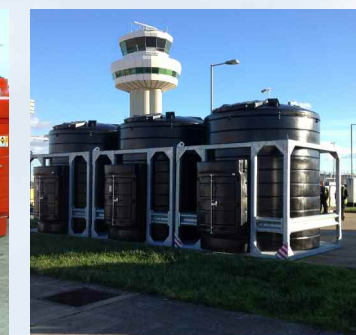
41 FAQ's

Find answers to some frequently asked questions here.



42 Tank Inspection & Maintenance Guidelines

A document produced by Tuffa UK Ltd.



ABOUT US

TUFFA UK IS A WELL ESTABLISHED BUSINESS OFFERING A PERSONABLE AND PROFESSIONAL SERVICE, WHILST HAVING THE COMMITMENT AND RESOURCES TO GO THE EXTRA MILE FOR OUR CUSTOMERS. TUFFA ARE PROUD OF THEIR IN HOUSE QUALITY SYSTEM AND AFTER-SALES SERVICE.

The Managing Director, who has engineering skills to develop products and manufacturing processes, has over 25 years experience in liquid storage and dispensing equipment. With the loyal support and dedication of the company's team, TUFFA UK has become the leading innovator in tank manufacturing, a forward thinking market leader in product design and future technology to assist industry and the consumer.

The factory is in central England, United Kingdom and is therefore logistically very well located with excellent transport links.

Our clients are both national and international for all the Tuffa range of tank products and include the following selection of businesses and industry:

- Factories
- Shops
- Offices and Institutions
- Local Government and Building Control
- The Transport Sector
- Schools
- Universities
- Hospitals
- Farms and Agriculture
- Charitable Organisations
- Churches
- Historic Buildings
- Construction
- Building Contractors
- Plumbers and Tank Installers
- Golf Courses
- Grounds Maintenance
- Water Authorities
- Oil Companies
- Garages
- Chemical and Pharmaceuticals
- Architects and Specifiers
- Facilities Management
- Sports and Amenity Sites
- ... and any other site requiring liquid storage

Accreditations and Awards

We take great care to ensure that all our tanks are manufactured to comply with the relevant legislation and industry body guidelines. Tuffa UK Ltd are members and supporters of a variety of groups and associations.



APHC
Association of Plumbing and Heating Contractors
www.aphc.co.uk



UKTI Defence and Security Organisation



LABC
Local Authority Building Control
www.labc.uk.com



Small Business Unit Chambre de Commerce
Francaise de Grande Bretagne
www.ccfgb.co.uk



Peninsula
Employer of Excellence



CE Marking
www.cemarkingassociation.co.uk



DEFRA
ECA Water Technology List
www.defra.gov.uk



HEATFED
Heating Engineers & Allied Trades Federation Ltd
www.heatfed.co.uk

CONTACT INFORMATION

Tuffa UK Limited,
Dovefields Industrial Estate,
Derby Road, Uttoxeter,
Staffordshire, ST14 8SW

Tel: +44 (0)1889 567 700
Fax: +44 (0)1889 567 600
Email: sales@tuffa.co.uk
www.tuffa.co.uk

Company Registration Number: 5444911
VAT Number: GB 861420544

TUFFA Water Tanks

THE GRASS IS GREENER ON THE OTHER SIDE with Tuffa Water Tanks

TUFFA's range of Water Storage Tanks are suitable for domestic, commercial, agricultural, horticultural, industrial and irrigation markets.

Our Rainwater Harvesting models allow you to collect and re-use captured rainwater.

This method of storing water means that we can utilise this free source of water, assisting the protection of this precious resource.

Tanks are available in sizes from 1,350 litres up to 200,000 litres, with bespoke steel tanks also being available to suit your specific requirements.

Save Water... Save Money

Logos: Recycle symbol, Tuffa Water Tanks logo, WRAS Approved Product logo.

TUFFA AdBlue

REDUCE YOUR CO² EMISSIONS .. with a Tuffa AdBlue Tank

THE CHEMICAL CHARACTERISTICS OF ADBLUE REQUIRE SPECIAL STORAGE AND HANDLING EQUIPMENT. ALL ADBLUE TANKS INCORPORATE SPECIALISED EQUIPMENT SUITABLE FOR THE ADBLUE AQUEOUS SOLUTION, AND ARE MANUFACTURED TO FULFIL THE HIGHEST DEMANDS OF QUALITY AND LONGEVITY

- CAPACITIES FROM 1350 TO 15000 LITRES with interlinking an option
- "SPACESAVER" MODELS AVAILABLE FOR SITES WITH LIMITED SPACE
- ALL ADBLUE TANKS INCORPORATE PREMIUM QUALITY EQUIPMENT, AND ARE OF A FULLY BUNDED CONSTRUCTION THAT OFFERS INTEGRAL PROTECTION FROM LEAKING AND OVERFILLING
- MANUFACTURED TO AUS32 / DEF GUIDELINES
- MANUFACTURING & DEVELOPING ADBLUE SYSTEMS FOR 10+ YEARS

Logos: CE Marking, Tuffa Tanks logo, F&S logo.

BUNDED OIL TANK RANGE

THE TUFFA® BUNDED OIL TANK RANGE IS AVAILABLE IN VARIOUS CAPACITIES INCLUDING 1350L, 1400L, 2500L, 3500L, 6000L, 10000L, 15000L AND INTERLINKING UP TO 100,000 LITRES.

The Tuffa range of banded heating oil tanks meet and exceed all current oil storage regulations in the UK. They are renowned for strength, reliability and quality. Suitable for Domestic, Commercial and Agricultural applications for new build and existing buildings, they:

- Safeguard the property against potential oil spills or ground contamination.
- Provide peace of mind knowing that the oil supply is stored in a good quality and reliable oil tank.
- Ensure your fuel is stored in a secure and regulation compliant manner.



1350SLB
Length: 2680mm
Width: 870mm
Height: 1665mm
Capacity: 1350 litres
Weight: 200kg

Key Benefits

- The bund contains a minimum 110% volume of the inner tank
- The banded construction offers integral protection from leakage and overfilling
- The covered bund prevents the collection of rainwater and debris
- Lockable outer cabinet (larger models), lockable flip lid (smaller models) allowing access to all equipment
- An overfill prevention device is fitted to all larger banded tanks; automatic shut off when the tank is full
- Made from recyclable polyethylene
- Corrosion resistant
- UV stabilised

Slim Line Bunded Tank (SLB)
Vertical Bunded Tank (VB)
Horizontal Bunded Tank (HB)



2500HB
Length: 2840mm
Width: 1520mm
Height: 1650mm
Capacity: 2500 litres
Weight: 270kg



1400VB
Diameter: 1585mm
Height: 1740mm
Capacity: 1400 litres
Weight: 160kg



3500VB **
Diameter: 2034mm
Height: 2520mm
Capacity: 3500 litres
Weight: 350kg



6000VB **
Diameter: 2580mm
Height: 2610mm
Capacity: 6000 litres
Weight: 410kg



10000VB
Diameter: 2890mm
Height: 2600mm
Capacity: 10000 litres
Weight: 470kg



15000VB
Diameter: 2860mm
Height: 3500mm
Capacity: 15000 litres
Weight: 700kg

Range Summary

Tank	Capacity (litres)	Length (mm)	Width (mm)	Diameter (mm)	Height (mm)	Weight (kgs)
1350SLB	1350	2680	870	-	1665	200
1400VB	1400	-	-	1585	1740	160
2500HB	2500	2840	1520	-	1630	270
3500VB	3500	-	-	2034	2520	350
6000VB	6000	-	-	2580	2610	410
10000VB	10000	-	-	2890	2600	470
15000VB	15000	-	-	2860	3500	700

Features

- 1350/1400/2500 models**
- Tank Pack as standard (1" – ½" adaptor, ball valve and filter)
 - 2" BSP Fill Point with cap and chain
 - Vent
 - Inspection Lid
 - Contents Gauge
 - Lockable Hinged Flip Lid
 - 1" BSP Bottom Outlet (Top Outlet available on request)
 - Colour: Black Bund and Clear Inner
- 3500/6000/10000/15000 models**
- 2" BSP Fill Point
 - Vent
 - Contents Gauge
 - 1" BSP Bottom Outlet (Top Outlet available on request)
 - An Overfill Prevention Valve
 - Lockable Fill Point Cabinet (** 3500/6000 optional extra)
 - Battery Bund & Overfill Alarm with Warning Light (** 3500/6000 optional extra)
 - Colour: Black

Optional Extras

- 1350/1400/2500 models**
- Lockable Fill Cap & Chain
 - Fire Protection
 - Top Outlet
 - Various other colours available
- 3500/6000/10000/15000 models**
- Lockable Fill Point Cabinet with Battery Bund and Overfill Alarm optional for the 3500/6000 models. Standard on the 10000/15000 models. *
 - Lockable Fill Cap & Chain
 - Fire Protection
 - High Accuracy Contents Gauge & Bund and Overfill Alarm Unit, 240V (Tuffa FMS)
 - Security Fill Point
 - Higher Accuracy Contents Gauge
 - High Security Steel Cabinet with Roller Shutter
 - Lockable Manway Access
 - Top Outlet
 - Various other colours available



Tank Pack is fitted as standard to 1350SLB, 1400VB and 2500HB models



GREAT PRODUCTS
GREAT PRICES
GREAT SERVICE

MONITORING THE CONTENTS:

1350/1400/2500 models

Clock Gauge: The smaller models are supplied with a visual contents gauge. The simple float device consists of a clock face attached with a float which provides a simple rough indication of the tank contents. The accuracy of the gauge is +/- 5% approximately and shows EMPTY, 1/4, 1/2, 3/4 or FULL.

3500/6000/10000/15000 models

Electronic Contents Gauge: The larger models are supplied with an electronic level monitoring gauge. The measurement reader is situated within the bund. The display unit is connected to a standard 3-pin socket in the house/premises. This system is pre-set at the factory and, once activated, will display the tank contents in 1/10ths.



What is it?

The Tuffa FireStop is an efficient and modern fire barrier system, designed for protecting the oil tank where fire protection is required. Ready factory fitted, quick and easy to install directly against the risk of FIRE.

What tank sizes are available?

The tanks are available for domestic and commercial applications ranging in size from 1350 litres – 15000 litres and are available with either 30 or 60 minute Fire Protection. Steel Tanks can also be tailor-made in a size to suit a particular site.

Do I have to do any extra works on site?

No not at all. The TUFFA Fire Stop is a simple method that requires no brickwork, barriers or Firewalls to be erected on site making sure there are no delays in installing the tank. The customer can have their new tank in the same place.

What about the installation?

The installation needs to be signed off by a competent person to comply with Local Authority Building Control, but installers who are a member of the APHC scheme can self certify.

Does it comply with Regulations?

The Tuffa FireStop is designed with a 'fire barrier' to protect oil tanks where fire protection is necessary. The fire barrier is constructed from high quality fire retardant material, with the following achievements:

Independently tested to BS476: Part 22: 1987

Independently tested to BS476 (Warrington Fire Research Centre)

Meets Section J 5.4 of Building Regulations, Table 5.1 for Fire Protection for Oil Storage Tanks

LABC (Local Authority Building Control) System Approval

CE marked in accordance with EN13341 and the Construction Products Regulations.

What sites are suitable for it?

Any site requiring a fire proof tank for their oil storage, and in most cases it allows the customers tank to stay in the same location.

Who are our customers?

A variety of domestic, commercial and industrial applications, institutions, local and national government departments.

Customer Installations



STEEL FIRE PROTECTED TANK RANGE



OUR STANDARD STEEL FIRE PROTECTED TANK RANGE IS AVAILABLE IN VARIOUS CAPACITIES, FROM 900 LITRES TO 8700LITRES, WITH LARGER CAPACITIES OF UP TO 200,000 LITRES AVAILABLE.

The inner tank is clad in either a 30 minute or 60 minute fire rated material, then completely enclosed in a mild steel bund making the unit weatherproof and secure. The fire rated material can be fitted to any Tuffa Tank giving a secure fire-rated oil storage solution for both the domestic and non-domestic market.



Larger and Bespoke models can also be manufactured to your exact requirements and can come complete with 30 minute or 60 minute Fire Protection making them suitable for Domestic, Industrial and Commercial applications.

900SBFP / 30 900SBFP / 60

Length: 1700mm
Width: 800mm
Height: 1250mm
Capacity: 900 litres
Weight: 500kg

1100SBFP / 30 1100SBFP / 60

Length: 2000mm
Width: 1000mm
Height: 1100mm
Capacity: 1100 litres
Weight: 650kg

1400SBFP / 30 1400SBFP / 60

Length: 2000mm
Width: 1250mm
Height: 1100mm
Capacity: 1400 litres
Weight: 775kg

1640SBFP / 30 1640SBFP / 60

Length: 1900mm
Width: 1250mm
Height: 1250mm
Capacity: 1640 litres
Weight: 800kg

2300SBFP / 30 2300SBFP / 60

Length: 2500mm
Width: 1250mm
Height: 1250mm
Capacity: 2300 litres
Weight: 950kg

4500SBFP / 60

Length: 3000mm
Width: 1500mm
Height: 1500mm
Capacity: 4500 litres
Weight: 1500kg

8700SBFP / 60

Length: 3600mm
Width: 1830mm
Height: 1830mm
Capacity: 8700 litres
Weight: 2200kg

Can be Installed
inside for Extra
Security



Small Security
cabinet available
as an optional
extra

Features

- Fire Retardant material Integrally fitted
- 2" BSP Fill Point complete with cap and chain
- Vent
- Clock gauge & Remote Reading Electronic Watchman Sonic Gauge, 240v mains.
- 1" BSP bottom outlet (Top Outlet available on request)
- Overfill Prevention Valve
- Channel Runners (these will increase the tank height)
- Lifting Lugs
- Primed and Painted in standard green (other colours available)

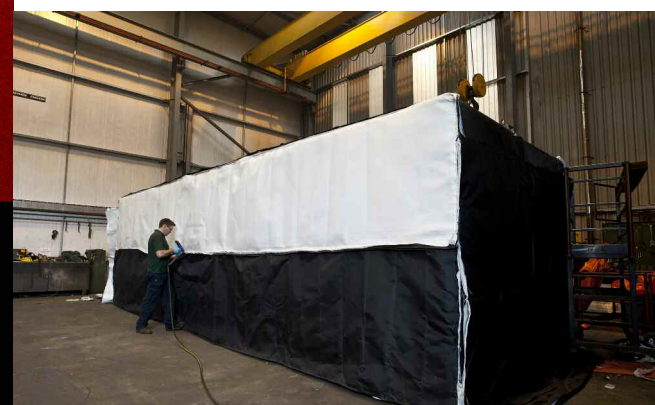
Optional Extras

- Lockable Fill Point Cabinet
- Tank Pack (1" – ½" adaptor, ball valve and filter)
- Lockable Fill Point
- Various colours available, including Sandstone



Larger sizes available

This Steel Fire Protected Inner Tank makes up part of a mammoth tank weighing in at 18 tonnes. The Tank measured up at 12000mm (L) x 2700mm (W) x 2500mm (H) and consisted of 1x 47,000 litre and 1x 10,000 litre compartments suitable to store Diesel and AdBlue respectively.



FIRE PROTECTED TANK RANGE

THE TUFFA® BUNDED FIRE PROTECTED TANK RANGE IS AVAILABLE IN VARIOUS CAPACITIES INCLUDING 1350L, 1400L, 2500L, 3500L, 6000L, 10000L, 15000L AND INTERLINKING UP TO 100,000 LITRES.

Our FireStop bundled tank can be manufactured to fit any capacity tank and can range from 30 minutes and 60 minutes protection making it suitable for domestic, industrial and commercial applications.

The FireStop is the only system on the market that fits integrally onto our plastic tanks and it can be factory fitted to any Tuffa Steel Tank. It uses a simple method that requires no brickwork, barriers or firewalls to be erected on site making sure there are no delays in installing the tank or added site costs.



Key Benefits

- Will benefit the end user, for Domestic and Commercial Applications.
- Will ensure compliance with Local Authority Building Control Services and thus the Building Regulations.
- Provide an easy, efficient means of installation.
- Will allow the tank to be fitted in a convenient location.
- Is Cost efficient as it requires no brickwork, barriers or firewalls to be erected on site making sure there are no delays in installing the tank or added site costs.
- Are Bunded and the Fire Retardant material is factory fitted integrally.
- Is available in both Plastic and Steel Fire Protected Oil Tanks.
- LABC Approved
- Independently tested to BS476
- Fire Protection allows the tank to be installed inside thus benefiting security.



1350SLBFP/30 1350SLBFP/60

Length: 2680mm
Width: 870mm
Height: 1665mm
Capacity: 1150 litres
Weight: 250kg



1400VBFP/30 1400VBFP/60

Diameter: 1585mm
Height: 1740mm
Capacity: 1200 litres
Weight: 210kg



2500HBFP/30 2500HBFP/60

Length: 2840mm
Width: 1520mm
Height: 1630mm
Capacity: 2300 litres
Weight: 320kg



3500VBFP/30 ** 3500VBFP/60

Diameter: 2034mm
Height: 2520mm
Capacity: 3500 litres
Weight: 400/450kg



6000VBFP/30 ** 6000VBFP/60

Diameter: 2580mm
Height: 2610mm
Capacity: 6000 litres
Weight: 460/510kg



10000VBFP/30 10000VBFP/60

Diameter: 2890mm
Height: 2600mm
Capacity: 10000 litres
Weight: 520/570kg



15000VBFP/30 15000VBFP/60

Diameter: 2860mm
Height: 3500mm
Capacity: 15000 litres
Weight: 750/800kg

Range Summary - Plastic Fire Protected Tanks

Tank	Capacity (litres)	Length (mm)	Width (mm)	Diameter (mm)	Height (mm)	Weight (kgs)
1350SLBFP30/60	1150	2680	870	-	1665	250
1400VBFP30/60	1200	-	-	1585	1740	210
2500HBFP30/60	2300	2840	1520	-	1630	320
3500VBFP30/60	3500	-	-	2034	2520	400/450
6000VBFP/60	6000	-	-	2580	2610	510
10000VBFP/60	10000	-	-	2890	2600	570
15000VBFP/60	15000	-	-	2860	3500	800

Features

- 1350/1400/2500 models**
- Tank Pack as standard (1" – ½" adaptor, ball valve and filter)
 - Fire Retardant Material Integrally fitted
 - 2" BSP Fill Point with cap and chain
 - Overfill prevention valve *(this reduces the working capacity)
 - Vent
 - Inspection Lid
 - Clock gauge &
 - Remote Reading Electronic Watchman Sonic Gauge, 240v mains
 - Lockable Hinged Flip Lid
 - 1" BSP Bottom Outlet (Top Outlet available on request)
 - Colour: Black

- 3500/6000/10000/15000 models**
- Fire Retardant Material Integrally fitted
 - 2" BSP Fill Point
 - Overfill Prevention Valve
 - Vent
 - Visual Content Reading Gauge &
 - Remote Reading Electronic Watchman Sonic Gauge, 240v mains
 - 1" BSP Bottom Outlet (Top Outlet available on request)
 - Lockable Fill Point Cabinet (** 3500/6000 optional extra)
 - Battery Bund & Overfill Alarm with Warning Light (** 3500/6000 optional extra)
 - Colour: Black

Optional Extras

- 1350/1400/2500 models**
- Lockable Fill Cap & Chain
 - Top Outlet
 - Various other colours available, including Green
- 3500/6000/10000/15000 models**
- Lockable Fill Point Cabinet with Battery Bund and Overfill Alarm optional for the 3500/6000 models. Standard on the 10000/15000 models*
 - Lockable Fill Cap & Chain
 - High Accuracy Contents Gauge & Bund and Overfill Alarm Unit, 240V (Tuffa FMS)
 - Higher Accuracy Contents Gauge
 - High Security Steel Cabinet with Roller Shutter
 - Lockable Manway Access
 - Top Outlet
 - Various other colours available including Green



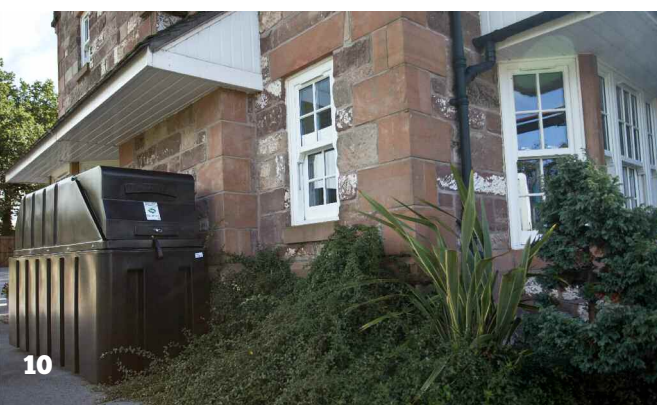
MONITORING THE CONTENTS:

1350/1400/2500

Clock Gauge: The smaller models are supplied with a visual contents gauge. The simple float device consists of a clock face attached with a float which provides a simple rough indication of the tank contents. **Electronic Contents Gauge:** A remote reading electronic Watchman Sonic Gauge is also fitted as standard to the smaller models.

3500/6000/10000/15000

Electronic Contents Gauge: The larger models are supplied with an electronic level monitoring gauge. The measurement reader is situated within the bund. The display unit is connected to a standard 3-pin socket in the house/premises. This system is pre-set at the factory and, once activated, will display the tank contents in 1/10ths.



BUNDED FUEL STATIONS AND ECONOMY

THE TUFFA® BUNDED OIL FUEL STATION RANGE IS AVAILABLE IN VARIOUS CAPACITIES INCLUDING 1350L, 1400L, 2500L, 3500L, 6000L, 10000L, 15000L AND INTERLINKING UP TO 100,000 LITRES.

The Tuffa® Bunded Fuel Station range are complete and ready to use; all that is required is a hard standing flat concrete base and your final electrical connection. All standard diesel storage tanks are fitted with submersible pumping units comprising of pump, flowmeter, delivery hose, and an automatic shut off nozzle, filtration and gauge. Larger capacities also come complete with bund and overfill devices and a lockable security cabinet containing any relevant equipment.

SAVE TIME... by avoiding the queues at the pumps & SAVE MONEY... by bulk buying your fuel.



Key Benefits

- Tailor made for Agricultural, Commercial and Industrial applications and for the safe, secure and responsible storage of Diesel.
- All refuelling equipment is housed in a high security lockable cabinet that has ample space for extras including hose reels.
- We use only premium quality equipment.
- Tanks are secure; all Tuffa tanks are fully lockable- Manufactured with a fully bunded construction that offers protection from weathering and overfilling.
- Overfill prevention device fitted to all larger models; automatic shut off when the tank is full.
- Standard, Economy and Bespoke models including Steel Fuel Tanks are available.
- The Tuffa FMS, a combined high accuracy gauge and bund/overflow alarm unit, is fitted to all larger models
- A wide variety of options are available to meet your requirements.
- Bespoke tanks available upon request.
- Fire protection available- allowing the tanks to be installed inside thus benefiting security.
- Tanks are UV Stabilised and Corrosion Resistant.
- The bund contains a minimum 110% volume of the inner tank
- Expert technical advice at hand to assist you.

1350SLBFS

Length: 2680mm
Width: 870mm
Height: 1665mm
Capacity: 1350 litres
Weight: 220kg

1350SLBFS Economy

Length: 2680mm
Width: 870mm
Height: 1665mm
Capacity: 1350 litres
Weight: 220kg

1400VBFS

Diameter: 1585mm
Height: 1740mm
Capacity: 1400 litres
Weight: 180kg

1400VBFS Economy

Diameter: 1585mm
Height: 1740mm
Capacity: 1400 litres
Weight: 180kg

2500HBFS

Length: 2840mm
Width: 1520mm
Height: 1630mm
Capacity: 2500 litres
Weight: 290kg

2500HBFS Economy

Length: 2840mm
Width: 1520mm
Height: 1630mm
Capacity: 2500 litres
Weight: 290kg

3500VBFS

Diameter: 2034mm
Height: 2520mm
Capacity: 3500 litres
Weight: 370kg

6000VBFS

Diameter: 2580mm
Height: 2610mm
Capacity: 6000 litres
Weight: 430kg

10000VBFS

Diameter: 2890mm
Height: 2600mm
Capacity: 10000 litres
Weight: 490kg

15000VBFS

Diameter: 2860mm
Height: 3500mm
Capacity: 15000 litres
Weight: 720kg

Range Summary

Tank	Capacity (litres)	Length (mm)	Width (mm)	Diameter (mm)	Height (mm)	Weight (kgs)
1350SLBFS	1350	2680	870	-	1665	220
1350SLBFSE	1350	2680	870	-	1665	220
1400VBFS	1400	-	-	1585	1740	180
1400VBFSE	1400	-	-	1585	1740	180
2500HBFS	2500	2840	1520	-	1630	290
2500HBFSE	2500	2840	1520	-	1630	290
3500VBFS	3500	-	-	2034	2520	370
6000VBFS	6000	-	-	2580	2610	430
10000VBFS	10000	-	-	2890	2600	490
15000VBFS	15000	-	-	2860	3500	720

Features

Standard Fuel Station - 1350/1400/2500 models

- 240V Submersible Pump (60lpm)
- 4 metres of Delivery Hose
- Automatic Shut-off Nozzle
- Nozzle Parker
- Digital flowmeter
- 10 micron Filtration
- Clock gauge
- 2" Fill Point
- Vent
- Lockable Hinged Flip Lid
- Colour: Black Bund with Clear inner tank.

Economy Fuel Station - 1350/1400/2500 models

- 240V Submersible Pump (60lpm)
- 4 metres of Delivery Hose
- Automatic Shut-off Nozzle
- 2" Fill Point
- Vent
- Lockable Hinged Flip Lid
- Colour: Black Bund with Clear inner tank.

Standard Fuel Station - 3500/6000/10000/15000 models

- 240V submersible pump (60lpm)
- 4 metres of Delivery Hose
- Automatic Shut-off Nozzle
- Nozzle Holster
- Digital Flowmeter
- 10 micron Filtration.
- Tuffa FMS – Combined High Accuracy Contents Gauge & Bund and Overfill Alarm.
- Key Switch – to operate the pump
- 2" Fill Point
- Vent
- Lockable Fill Point Cabinet
- Overfill Prevention Valve
- Colour: Black

Optional Extras

- Higher Output Pump (80lpm approx.)
- 12V/24V Pump
- Extra Delivery Hose (per metre)
- Higher Accuracy Contents Gauge
- 10micron Filter – Particulate Only
- 10micron Filter - Water & Particulate
- Fuel Management System
- High Security Steel Cabinet c/w roller shutter
- Armco Protection Barrier
- Hose Reel
- Light within Cabinet
- Fire Protection
- Locking Fill Cap with keys



Monitoring the tank contents

1350/1400/2500 models *excludes economy

Clock Gauge: The smaller models are supplied with a visual contents gauge. The simple float device consists of a clock face attached with a float which provides a simple rough indication of the tank contents. The accuracy of the gauge is +/- 5% approximately and shows EMPTY, 1/4, 1/2, 3/4 or FULL.

3500/6000/10000/15000 models

FMS: The Fuel Level Monitoring System is a combined high accuracy tank level indicator and bund and overfill alarm that is designed to provide both visual and audible alarms whenever a predetermined level in a storage tank is reached. It also gives a content readout in both litres and a percentage and can be pre-configured for Derv, Gas Oil and AdBlue with the option for self-calibration of other liquids.

DUAL COMPARTMENT RANGE

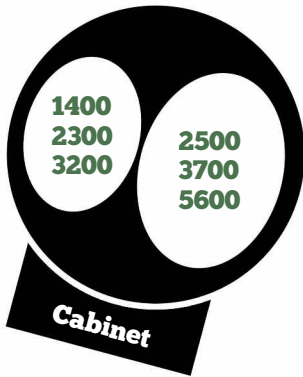
THE TUFFA® DUAL COMPARTMENT TANK RANGE IS AVAILABLE IN VARIOUS CAPACITIES INCLUDING 1400L/2500L, 2300L/3700L AND 3200L/5600L.

Our Dual Compartment Tanks have the capacity to store up to two different types of liquid, although triple compartment tanks can be quoted for. The Dual range is available in three different sizes, and come complete and ready to use.

Tuffa have developed a range of Dual Compartment Bunded Fuel Stations. The innovation behind the largest in the range is that it has the capacity to store three different products in the same bunded tank - derv, gas oil, hydraulic, lubes & gear oils, antifreeze, AdBlue, bio-diesel etc.

The Dual Compartment bunded fuel station is convenient for filling, space saving on a communal base and each product can be separately dispensed and monitored. A major plus is the cost saving as there is no need to purchase separate tanks.

Alternatively, if a dispensing system is not required for each compartment, we are able to accommodate this by manufacturing the tank with compartments with and without dispensing equipment.



3200/5600VBFS Dual

Diameter: 2860mm
Height: 3500mm
Capacity:
Compartment 1: 3200 litres
Compartment 2: 5600 litres
Weight: 740kg

Triple
Compartment
Tanks & Bespoke
Steel Models
available

Features

- 2 x 240V submersible pump (60lpm approx).
- 2 x 4 metres of Delivery Hose
- 2 x Automatic Shut-off Nozzle.
- 2 x Nozzle Holster.
- 2 x Digital Flowmeter.
- 2 x 10 micron Filtration.
- 2 x Tuffa FMS – Combined High Accuracy Contents Gauge & Bund and Overfill Alarm.
- 2 x Key Switch – to operate the pump
- 2 x 2" Fill Point
- Vent.
- 1 x Lockable Fill Point Cabinet
- 2 x Overfill Prevention Valve *(this reduces the working capacity)
- Colour: Black

Key Benefits

- Suitable for agricultural, commercial and industrial applications.
- Horizontal and vertical models available.
- Refueling equipment easily accessible from ground level.
- The bund contains a minimum 110% volume of the inner tank.
- The bunded construction offers integral protection from leakage and overfilling.
- Covered bund prevents the collection of rainwater and debris.
- Lockable outer cabinet allowing access to all equipment.
- Overfill prevention device fitted to all large bunded tanks; automatic shut off when the tank is full.
- Made from recyclable polyethylene.
- Corrosion resistant.
- UV stabilised.

1400/2500VBFS Dual

Diameter: 2890mm
Height: 2600mm
Capacity:
Compartment 1: 1400 litres
Compartment 2: 2500 litres
Weight: 510kg

2300/3700VBFS Dual

Diameter: 2890mm
Height: 2600mm
Capacity:
Compartment 1: 2300 litres
Compartment 2: 3700 litres
Weight: 530kg

Common Uses:

Diesel & Derv 1400/2500	Diesel & AdBlue 3200/5600	Diesel & AdBlue Bespoke Steel

Optional Extras

- Higher Output Pump (80lpm approx.)
- 12V/24V Pump
- Extra Delivery Hose (per metre)
- Higher Accuracy Contents Gauge
- 10micron Filter – Particulate Only
- 10micron Filter - Water & Particulate
- Fuel Management System
- High Security Steel Cabinet c/w roller shutter
- Armco Protection Barrier
- Hose Reel
- Light within Cabinet
- Fire Protection
- Locking Fill Cap with keys

Range Summary

Tank	Capacity (litres)	Length (mm)	Width (mm)	Diameter (mm)	Height (mm)	Weight (kgs)
1400/2500VBFS	1400					
Dual	2500	-	-	2890	2600	510
2300/3700VBFS	2300					
Dual	3700	-	-	2890	2600	530
3200/5600VBFS	3200					
Dual	5600	-	-	2860	3500	740

TWO DIFFERENT LIQUIDS: ONE TUFFA TANK

Agricultural Machinery



Commercial Transport



Monitoring the tank contents

The Fuel Level Monitoring System is a combined high accuracy tank level indicator and bund and overfill alarm that is designed to provide both visual and audible alarms whenever a predetermined level in a storage tank is reached. It also gives a content readout in both litres and a percentage and can be pre-configured for Derv, Gas Oil and AdBlue with the option for self-calibration of other liquids.

Digital Flowmeter

The digital flowmeter on all standard Fuel Stations has two readings, a batch total which can be reset and a totaliser which can not be reset.

WASTE OIL TANK RANGE

THE TUFFA® BUNDED WASTE OIL TANK RANGE IS AVAILABLE IN CAPACITIES OF 1350L, 1400L, 2500 AND LARGER SIZES ARE AVAILABLE.

Waste Oil needs to be stored in a safe and secure container. The Tuffa® Waste Oil Range are designed with pollution control in mind and are manufactured to all appropriate current legislations with in the oil industry, pending correct installation.



Key Benefits

- The bund contains a minimum 110% volume of the inner tank.
- The bunded construction offers integral protection from leakage and overfilling.
- The clear inner tank provides a visual measure of the liquid level.
- Covered bund prevents the collection of rainwater and debris.
- Lockable hinged cover on outer tank allows easy access to equipment.
- Made from recyclable polyethylene.
- Corrosion resistant.
- UV stabilised.

Features

- Vent
- Lockable Hinged Flip Lid
- Tundish and filter – sited at a suitable height for pouring waste in to
- Colour: Black with Yellow Flip Lid

Optional Extras

- Fire Protection
- Suction Points - various sizes
- Pumping Arrangements
- Electronic Watchman Sonic, remote contents reading gauge
- Visual Contents Gauge

3500 – 15000 litre bunded models also available



SINGLE SKIN TANK RANGE

THE TUFFA® SINGLE SKIN OIL TANK RANGE IS AVAILABLE IN CAPACITIES OF 1350L, 1400L, 2500L AND LARGER SIZES ARE AVAILABLE.



The Tuffa® Single Skin Oil Tank Range are rotationally moulded from Medium Density Polyethylene. They are an economical solution for the storage of home heating oil at above ground oil storage tank installations at single family dwellings, when a bunded tank is not required.

Our single skin tanks are lightweight and easy to install. Applications include Heating Oil, Water and Animal feeds. They require very little maintenance and are UV stabilised. A typical single skin plastic tank comes in a standard black colour. However we can offer an aesthetically pleasing sandstone colour to camouflage into more rural areas with the surrounding outbuildings. Other colour options are available.



1350SL
Length: 2060mm
Width: 670mm
Height: 1440mm
Capacity: 1350 litres
Weight: 200kg



1400V
Diameter: 1576mm
Height: 1800mm
Capacity: 1400 litres
Weight: 160kg



2500V
Diameter: 1576mm
Height: 1400mm
Capacity: 2500 litres
Weight: 80kg



2500H
Length: 2100mm
Width: 1250mm
Height: 1400mm
Capacity: 2500 litres
Weight: 100kg

Key Benefits

- Fitted with a sealed inspection hatch for easy access.
- Weatherproof.
- Made from recyclable polyethylene.
- Maintenance free.
- Corrosion resistant.
- UV stabilised.

Features

- Tank Pack as standard (1" – ½" adaptor, ball valve and filter)
- 2" Fill Point
- Vent
- Inspection Lid
- 1" Bottom Outlet
- Contents Gauge
- Colour: Black

Optional Extras

- Electronic Contents Gauge
- Lockable Fill Point
- Various other colours available



Tank Pack and Clock Gauge included

Range Summary

Tank	Capacity (litres)	Length (mm)	Width (mm)	Diameter (mm)	Height (mm)	Weight (kgs)
1350SL	1350	2060	670	-	1440	75
1400V	1400	-	-	1210	1500	60
2500H	2500	2100	1250	-	1400	100
2500V	2500	-	-	1576	1800	100

Monitoring the tank contents

Clock Gauge

The smaller models are supplied with a visual contents gauge. The simple float device consists of a clock face attached with a float which provides a simple rough indication of the tank contents. The accuracy of the gauge is +/- 5% approximately and shows EMPTY, 1/4, 1/2, 3/4 or FULL.

Range Summary

Tank	Capacity (litres)	Length (mm)	Width (mm)	Diameter (mm)	Height (mm)	Weight (kgs)
1350SLBWOS	1350	2680	870	-	1665	200
1400VBWOS	1400	-	-	1585	1740	160
2500HBWOS	2500	2840	1520	-	1630	270

Further Details

A Tuffa Waste Oil Tank would benefit businesses in the motoring industry such as Garages, Bus Depots, Haulage companies etc. It will ensure that the waste oil is stored safely and securely at a reasonable price. Tuffa Tanks are environmentally friendly, helping to reduce the risk of spillages and having a range of sizes helps the customer to decide which tank would be best suited to their needs.

A large tank would not need emptying as frequently as a smaller tank, therefore reducing the bills for removing the waste oil out of the tank. If the tank is needed but not used to a great extent it would be a lot more useful to have a smaller tank. Waste oil tanks means that the oil inside will be recycled, when taken away by a waste disposal company; this is called 'sump' oil. Although the oil has been used it can be cleaned of contaminants and then recycled again and again - saving the environment. This recycled oil can then be used for many things.

WATER TANK RANGE

TUFFA HAVE BEEN MANUFACTURING ABOVE GROUND WATER STORAGE TANK SOLUTIONS FOR OVER 25 YEARS, AND ARE RENOWNED FOR THEIR STRENGTH AND DURABILITY. TUFFA WATER TANKS ARE ROTATIONALLY MOULDED AS A 'ONE-PIECE' TANK, AND THE MANUFACTURING PROCESS ENSURES MAXIMUM WALL THICKNESS AT THE BASE – WHERE IT NEEDS IT MOST.

Available in capacities from 1350 litres to 20000 litres in a single unit, our Water Tanks are designed for uses throughout the agricultural, commercial, domestic, horticultural, and industrial and irrigation markets.



1350SLW
Length: 2060mm
Width: 670mm
Height: 1440mm
Capacity: 1350 litres
Weight: 75kg



1400VW
Diameter: 1210mm
Height: 1480mm
Capacity: 1400 litres
Weight: 60kg



2500HW
Length: 2105mm
Width: 1255mm
Height: 1410mm
Capacity: 2500 litres
Weight: 100kg



2500VW
Diameter: 1585mm
Height: 1780mm
Capacity: 2500 litres
Weight: 100kg

Key Benefits

- Suitable for Domestic, Commercial, Agricultural, Horticultural, Industrial and Irrigation markets
- Available in capacities from 1350 litres to 20000 litres, and can also be interlinked to obtain much larger capacities
- Non-Potable and Potable models available
- Potable Tanks manufactured from a WRAS Approved Polyethylene
- Steel Water Tanks also available
- Quick and Easy to Install
- Tough and Durable
- Fitted with a sealed manway cover or inspection hatch for easy access
- Manufactured in a UV Stabilised Material
- Weatherproof
- Maintenance Free
- Corrosion Resistant

Non-Potable Water Tanks – tanks for Irrigation, Liquid Fertiliser, Molasses and Rainwater Harvesting.

Potable Water Tanks – tanks intended for human consumption and are approved by the Water Regulations Advisory Scheme (WRAS).



3500VW
Diameter: 1594mm
Height: 2360mm
Capacity: 3500 litres
Weight: 140kg



6000VW
Diameter: 2013mm
Height: 2295mm
Capacity: 6000 litres
Weight: 140kg



10000VW
Diameter: 2577mm
Height: 2450mm
Capacity: 10000 litres
Weight: 240kg



15000VW
Diameter: 2578mm
Height: 3390mm
Capacity: 15000 litres
Weight: 340kg



20000VW
Diameter: 2900mm
Height: 3580mm
Capacity: 20000 litres
Weight: 360kg

Features

- Ventilation
- An Inspection Hatch (1350-2500 models) or
- A Manway Access (3500+ models)
- UV Stabilised Material, Black in Colour
- 1" Bottom Outlet. Larger and additional sockets available

Optional Extras

INLETS

- Multiple Sizes and Connections available
- Splash Fill
- Ball Float Valves
- Overflows and Backflow Prevention
- Calmed Inlets

OUTLETS

- Multiple Sizes and Connections available
- Flooded Suction / Drop Suction
- Isolation Valves
- Interlinking Connections
- Gravity Feed or Pumping Units

WATER MANAGEMENT

- Water Demand Control
- Automated Pumping Systems
- Water Level Indicators and Alarms

Range Summary

Tank	Capacity (litres)	Length (mm)	Width (mm)	Diameter (mm)	Height (mm)	Weight (kgs)
1350SLW-NP & 1350SLW-Pot	1350	2060	670	-	1440	75
1400VW-NP & 1400VW-Pot	1400	-	-	1210	1480	60
2500HW-NP & 2500HW-Pot	2500	2105	1255	-	1410	100
2500VW-NP & 2500VW-Pot	2500	-	-	1585	1780	100
3500VW-NP & 3500VW-Pot	3500	-	-	1594	2360	140
6000VW-NP & 6000VW-Pot	6000	-	-	2013	2295	140
10000VW-NP & 10000VW-Pot	10000	-	-	2577	2450	240
15000VW-NP & 15000VW-Pot	15000	-	-	2578	3390	340
20000VW-NP & 20000VW-Pot	20000	-	-	2900	3580	360

TANKS CAN BE INTERLINKED TO OBTAIN LARGER CAPACITIES



WRAS
APPROVED PRODUCT

Agricultural



Domestic



Irrigation



Agricultural



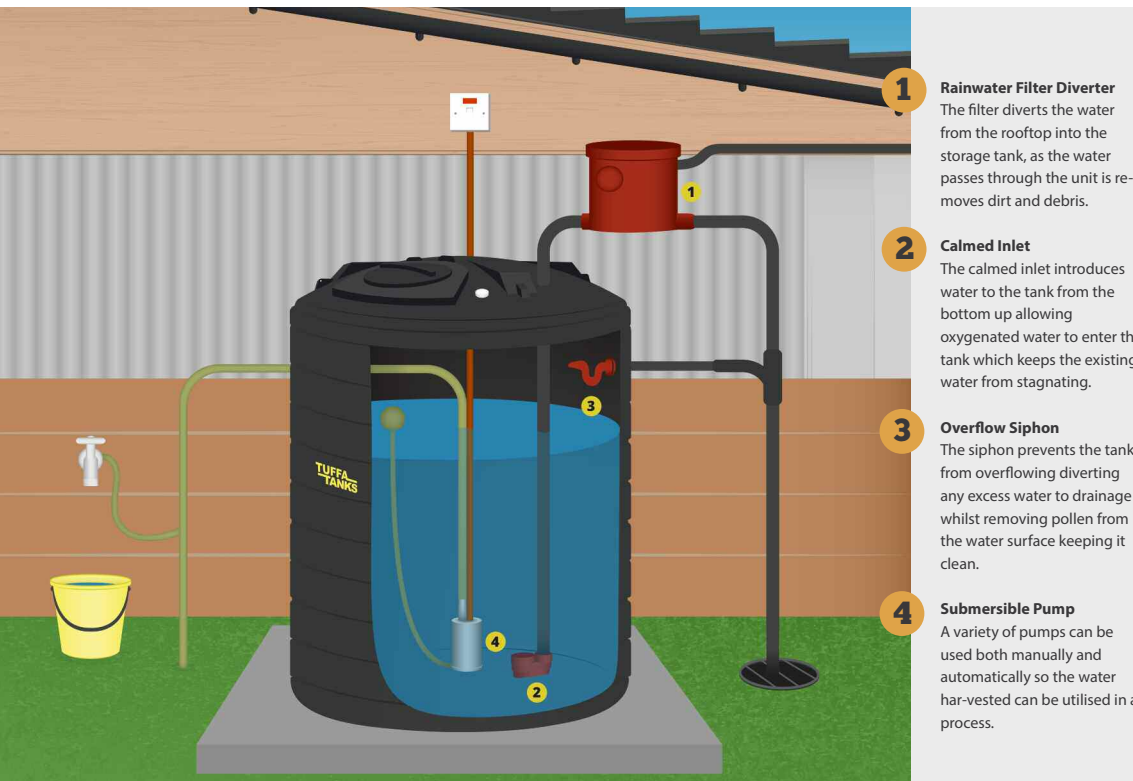
RAINWATER HARVESTING TANKS



NO ROOM TO DIG A HOLE? THESE KITS FROM 1350 LITRES TO 20000 LITRES ARE FOR ABOVEGROUND AND COME WITH THE COMPONENTS TO COLLECT, FILTER, STORE AND PUMP THE RAINWATER TO WHERE YOU WANT IT.

Types of Rainwater harvesting systems we offer...

- Domestic systems, either direct or indirect (gravity/header tank versions) including potable upgrade where appropriate.
- Garden/irrigation systems.
- Commercial systems (bespoke)



- 1 Rainwater Filter Diverter**
The filter diverts the water from the rooftop into the storage tank, as the water passes through the unit it removes dirt and debris.
- 2 Calmed Inlet**
The calmed inlet introduces water to the tank from the bottom up allowing oxygenated water to enter the tank which keeps the existing water from stagnating.
- 3 Overflow Siphon**
The siphon prevents the tank from overflowing diverting any excess water to drainage whilst removing pollen from the water surface keeping it clean.
- 4 Submersible Pump**
A variety of pumps can be used both manually and automatically so the water harvested can be utilised in a process.

Features

- 240V water butt pump with Gardena/Hoselock type male snap connector (compatible with most standard garden fittings i.e. hose pipes).
- Rainwater Diverter (Filter options available)
- Inspection lid for visual contents gauging
- Bottom outlet with valve
- Colour: Black

Optional Extras

- Rainwater Collector with leaf separator
- Alternative pumping systems available
- Various other colours available, including Green and Stone effect
- Larger capacities available

Slim line Rainwater Harvester (SLRWH)
Vertical Rainwater Harvester (VRWH)
Horizontal Rainwater Harvester (HRWH)



1350SLRWH

Length: 2060mm
Width: 670mm
Height: 1440mm
Capacity: 1350 litres
Weight: 75kg



1400VRWH

Diameter: 1210mm
Height: 1480mm
Capacity: 1400 litres
Weight: 60kg



2500HRWH

Length: 2105mm
Width: 1255mm
Height: 1410mm
Capacity: 2500 litres
Weight: 100kg



2500VRWH

Diameter: 1585mm
Height: 1780mm
Capacity: 2500 litres
Weight: 100kg

Larger models available



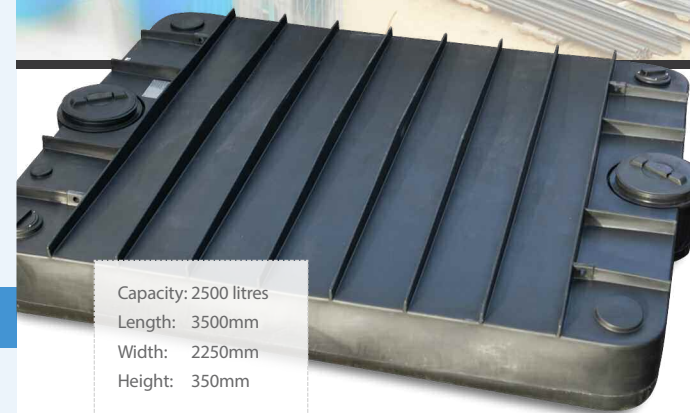
SAVE MONEY

The Tuffa® Big Butt range has been developed to SAVE money and maximise your potential to overcome a hose pipe ban in your area. Our systems, due to their greater capacities, which are up to ten times more than regular water butts, enable all your watering worries to be met with the additional capacity of washing your car etc.



Tuffa Water & Effluent Bowzers

High Quality accompaniments for your site welfare units ensuring you have all the facilities you need to meet your exact requirements.



Capacity: 2500 litres
Length: 3500mm
Width: 2250mm
Height: 350mm

EFFLUENT TANK

High capacity 2500 litre tanks that are easy to maintain and transport

A septic unit designed to fit under portable cabins where mains effluent / drainage on site is not available. This tank fits perfectly underneath cabins of all descriptions.

They are an excellent temporary effluent waste storage device. Tanks can be buried or sited underneath toilet blocks, kitchens, canteens and welfare units.

Tanks are space-saving and can ideally be stored on end.

Benefits

2x Large sealed inspection lids; to prevent spillages and odour | 2x 4" connections to connect to toilet unit | Convenient Lifting Eyes
Easily linkable to allow creation of larger capacity tanks | Rigid and strong design | Manufactured in Plastic making them much lighter than Steel equivalents, therefore easier to transport and move around on site and meaning they are not subject to rust | Far more hygienic material than steel | A telemetry option is available to monitor waste levels and prevent overflowing | 4x Lifting handles

WATER BOWSER

The perfect solution for outdoor areas that may be inaccessible to larger vehicles

High-capacity bowser for water supply on sites with no mains connections. These can provide cost effective, rapid water supply solutions to suit applications such as construction sites, festivals, event hire, greenfield sites or water supply emergencies.

The water bowser can provide all the water you need for your on-site facilities. It's housed in a robust, lockable steel structure for protection against vandalism, and can be moved with a standard forklift. The small and compact unit can also be painted in any corporate colour.

Constant water pressure for all site amenities

To supply your appliances with water at a constant pressure of 4 bar, the bowser is fitted with a pump inside the steel housing. That means you won't suffer the low-pressure problems associated with many on-site water tanks.

Built-in frost protection for uninterrupted water supply

The steel housing is insulated to provide frost protection. The bowser is also fitted with a thermostatically controlled tube heater to prevent the water from freezing – ensuring you always have a supply of running water, whatever the weather.

Improved site sustainability with rainwater harvesting

The bowser incorporates a rainwater harvesting system, which can help to reduce the frequency of tanker refills – enhancing the sustainability of your site. When refills by tanker are required, the bowser has an easy-access filling point to make this process as simple as possible.



Capacity: 1400 litres
Length: 1500mm
Width: 1500mm
Height: 1900mm



BRITISH BUILT

MOLASSES TANK RANGE

TUFFA TANKS ARE THE IDEAL MOLASSES STORAGE SOLUTION; OUR HEAVY DUTY MOLASSES TANKS ARE MANUFACTURED WITH A THICKER WALL, MAKING THEM SUITABLE FOR THE STORAGE OF THIS HIGHER DENSITY PRODUCT.

Our range of Tuffa Tanks are specially designed to suit the storage of molasses. Each tank comes complete with an inspection lid / manway access, good ventilation (to reduce condensation and bacterial growth) and other equipment can be fitted per your requirements.

What is Molasses?

Molasses is a thick, dark brown, uncrystallized juice obtained from raw sugar during the refining process, and has a specific gravity of 1.45.

What is Molasses used for?

Molasses is sold both for human consumption, to be used in baking, and in the brewing of ale and distillation of rum, and as an ingredient in animal feed.

Storing your Molasses

With proper storage, molasses can last a long time. Heat and humidity can cause molasses to get moldy. Store it in a cool, dry place and be sure it is tightly closed. It can be stored for long periods without deterioration providing dilution does not occur. If dilution does occur molasses is liable to ferment fairly quickly. Storage tanks therefore must be constructed so that water cannot get in, and in addition tanks should be vented to prevent condensation taking place and diluting the surface of the molasses. An adequate system of ventilation also helps to prevent steel tanks from rusting.



Key Benefits

- Plastic Molasses Tanks available in sizes from 1350 litres to 20000 litres as a single unit
- Steel Molasses Tanks available in ALL sizes
- Our Tanks are specially designed to suit the storage of Molasses, a specific gravity of 1.45.
- Designed with good ventilation to reduce condensation and bacterial growth.
- Tanks can be fitted with ANY connections, to suit your specific requirements.
- Tanks are available in a wide variety of colours, to suit the environment.
- All Tuffa Molasses Tanks are Heavy Duty.

INTERLINKING UP TO 200,000 LITRES

Range Summary

Tank	Capacity (litres)	Length (mm)	Width (mm)	Diameter (mm)	Height (mm)	Weight (kgs)
1350SLW-Molasses	1350	2060	670	-	1440	75
1400VW- Molasses	1400	-	-	1210	1500	60
2500HW- Molasses	2500	2100	1250	-	1400	100
2500VW- Molasses	2500	-	-	1576	1800	100
3500VW- Molasses	3500	-	-	1576	2400	140
6000VW- Molasses	6000	-	-	2022	2200	140
10000VW- Molasses	10000	-	-	2500	2450	240
15000VW- Molasses	15000	-	-	2547	3350	340
20000VW- Molasses	20000	-	-	2900	3580	360

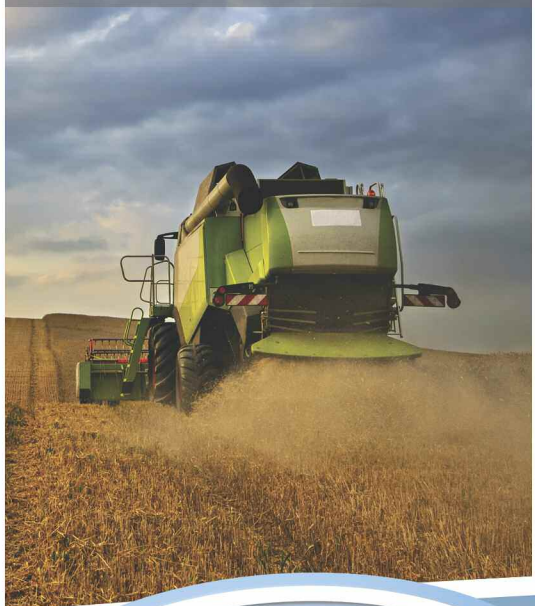


Manufacturing and Developing AdBlue Systems for over 10 years

On Road



Off Road



Marine



PROFESSIONAL
SOLUTIONS

TUFFA
AdBlue

PREMIUM
QUALITY



Tuffa UK Ltd

+44 (0)1889 567700

sales@tuffa.co.uk | www.tuffa.co.uk



ADBLUE TANK RANGE

THE TUFFA® BUNDED ADBLUE TANK RANGE IS AVAILABLE IN VARIOUS CAPACITIES INCLUDING 1350L, 1400L, 2300L, 2500L, 3200L, 3500L, 5600, 6000L, 10000L, 15000L AND INTERLINKING UP TO 100,000 LITRES.

AdBlue tanks provide a simple storage solution for anyone who uses AdBlue in their vehicles. At Tuffa we provide multiple storage options so that the companies are able to store their own AdBlue and diesel fluids. When storing AdBlue it's important to not let any foreign objects come into contact with the fluid which will cause contamination, and the temperature should not fall below -11 Degrees Celsius.

Our AdBlue tanks are designed to meet the needs of the fluid and are customisable so the needs of the company can be met too. One of our popular choices of tanks is the fully bundled 1350 tank. It comes with a fill connection, float level gauge, submersible pump, hinged flip lid, nozzle holster, shut off nozzle and delivery hose and a digital flow meter. As with almost all tanks it's possible to place a bespoke order.



Plastic Inner
Steel Outer



3200SBFS / ADBLUE

Length: 1850mm
Width: 1250mm
Height: 3500mm
Capacity: 3200 litres
Weight: 2000kg

3500VBFS / ADBLUE

Diameter: 2034mm
Height: 2520mm
Capacity: 3500 litres
Weight: 370kg

5600SBFS / ADBLUE

Length: 2300mm
Width: 1700mm
Height: 3500mm
Capacity: 5600 litres
Weight: 2500kg

Key Benefits

- We are the UK's Largest AdBlue Tank Manufacturer
- Suitable for Commercial and Industrial applications
- A wide variety of capacities available from **1,350 litres to 15,000 litres**, and interlinking to obtain larger capacities is an option.
- Horizontal and Vertical models available
- Plastic inner / Steel outer** (Spacesaver) models available for sites with limited space
- All AdBlue tanks incorporate **premium quality equipment**, and are of a fully bundled construction that offers integral protection from leaking and overfilling.
- The **Tuffa FMS**, a combined high accuracy gauge and bund/overflow alarm unit, is fitted to all larger models
- The refuelling equipment is easily accessible on all tanks from ground level
- Tanks are secure; all Tuffa tanks are **fully lockable**
- Manufactured to **AUS32 / DEF Guidelines**
- The bund contains a minimum 110% volume of the inner tank
- Tanks are UV Stabilised and Corrosion Resistant

1350SLBFS / ADBLUE

Length: 2680mm
Width: 870mm
Height: 1665mm
Capacity: 1350 litres
Weight: 220kg



1400VBFS / ADBLUE

Diameter: 1585mm
Height: 1740mm
Capacity: 1400 litres
Weight: 180kg



2300SBFS / ADBLUE

Length: 1850mm
Width: 1250mm
Height: 2500mm
Capacity: 2300 litres
Weight: 1500kg

2500HBFS / ADBLUE

Length: 2840mm
Width: 1520mm
Height: 1630mm
Capacity: 2500 litres
Weight: 290kg

Plastic Inner
Steel Outer



6000VBFS / ADBLUE

Diameter: 2580mm
Height: 2610mm
Capacity: 6000 litres
Weight: 430kg



10000VBFS / ADBLUE

Diameter: 2890mm
Height: 2600mm
Capacity: 10000 litres
Weight: 490kg



15000VBFS / ADBLUE

Diameter: 2860mm
Height: 3500mm
Capacity: 15000 litres
Weight: 720kg

Heating Packages available: call us for more details.

Range Summary

Tank	Capacity (litres)	Length (mm)	Width (mm)	Diameter (mm)	Height (mm)	Weight (kgs)
1350SLBFS/ADBLUE	1350	2680	870	-	1665	220
1400VBFS/ADBLUE	1400	-	-	1585	1740	180
2300SBFS/ADBLUE	2300	1850	1250	-	2500	1500
2500HBFS/ADBLUE	2500	2840	1520	-	1630	290
3200SBFS/ADBLUE	3200	1850	1250	-	3500	2000
3500VBFS/ADBLUE	3500	-	-	2034	2520	370
5600VBFS/ADBLUE	5600	2300	1700	-	3500	2500
6000VBFS/ADBLUE	6000	-	-	2580	2610	430
10000VBFS/ADBLUE	10000	-	-	2890	2600	490
15000VBFS/ SKYBLUE	15000	-	-	2860	3500	720

Features

Standard AdBlue Dispensing Tank - 1350/1400/2500 models

- 2" Todo Type Fill Coupling
- Screened Vent
- 240V Submersible Pump
- Lockable Hinged Flip Lid
- 4 metres of Delivery Hose
- Stainless Steel 'Y' filter
- Automatic shut off nozzle
- Nozzle Holster
- Digital Flowmeter
- Visual Contents Gauge
- Colour: Blue

Standard AdBlue Dispensing Tank - 2300/3200/3500/5600/6000/10000/15000 models

- 2" Todo Type Fill Coupling
- Screened Vent
- 240V Submersible Pump
- 4 metres of Delivery Hose
- Stainless Steel 'Y' filter
- Automatic shut off nozzle
- Nozzle Holster
- Digital Flowmeter
- Tuffa FMS - Combined High Accuracy Contents Gauge & Bund and Overfill Alarm.
- Lockable Cabinet
- Colour: Blue

Optional Extras

- Auto-operation Nozzle Holster** - like standard forecourt pumps, an auto-operation nozzle holster cuts off the pump when the user finishes dispensing
- Pulsed Output Flowmeter** - allows connection to an existing fuel monitoring system
- Temperature Control Environment Package** - for applications which are to be employed in to extreme environments
- Liquid Monitoring Remote Management Systems** - that have the capability to control and manage the consumption of AdBlue
- Telemetry** - Remote contents level monitoring via web
- Hose Reel** - various lengths
- Extra length Delivery Hose**

Monitoring the tank contents

1350/1400/2500 models

Clock Gauge: The simple float device consists of a clock face attached with a float which provides a simple rough indication of the tank contents. The accuracy of the gauge is +/- 5% approximately and shows EMPTY, 1/4, 1/2, 3/4 or FULL.

2300/3200/3500/5600/6000/10000/15000 models

FMS: The Fuel Level monitoring System is a combined high accuracy tank level indicator and bund and overfill alarm that is designed to provide both visual and audible alarms whenever a predetermined level in a storage tank is reached. It also gives a content readout in both litres and a percentage.

All models

Digital Flowmeter: This has two readings, a batch total which can be reset and a totaliser which can not be reset.

TODO Type Fill Coupling: Designed for rapid filling of tanks this coupling comprises of a valve that opens and closes automatically on connection and disconnection.



Garage Forecourt



CHEMICAL TANK RANGE

OUR PRODUCTS INCLUDE ROTATIONALLY MOULDED PLASTIC TANKS, MILD STEEL AND STAINLESS STEEL AND COMBINATION MATERIAL TANKS.

Tuffa UK Limited is a UK manufacturer who specialise in the design and manufacture of storage tanks.

"Over 25 years experience in the manufacture of Chemical Storage Tank Solutions"
We offer one of the largest ranges of storage tank solutions in the UK for above ground installations and all Tuffa tanks are subject to the highest and best Quality Check (QC) procedures ensuring constant high quality products.



Key Benefits

- Fully Enclosed, Fully Compliant, Safe and Secure Storage Solutions
- Complete Packages provided Corporate Colours available
- Easy to Maintain
- First Class Service from the experts at Tuffa Tanks
- Web Based Level Monitoring System standard on all larger models (3500+)
- Designed, manufactured and tested in-house at our works in Uttoxeter, Staffordshire.
- Chemical Storage tanks up to 15,000 litres in a single unit with the option of interlinking available to obtain larger capacities.
- Our Bunded Chemical Tank range is an integrally bunded tank range which provides a self contained solution to the safe storage of an extensive range of chemicals.
- Suitable for large capacity Dosing requirements. Moulded in one - piece and designed for durability and practical usage.
- Seamless Rotationally Moulded tanks in Polyethylene, Polypropylene also available
- Premium quality fittings and connections available to provide a complete storage solution.
- Numerous optional extras available, including a range of gauge systems, access ladders and platforms, Armco Protection Barrier and much more.
- Tuffa are able to manufacture bespoke systems to suit your exact requirements.
- Temperature Controlled Solutions available.

What equipment do I need?

The Single Skin range is from 1,350 litres to 20,000 litres and the Bunded range from 1,350 litres to 15,000 litres (working capacity). The larger bunded tanks (3,500 litres to 15,000 litres) can be supplied complete with an integral cabinet with double doors and stainless steel locking gear, for the housing of dosing pumps, electrical control equipment and tanker delivery fill point.

Tuffa has developed a range of Chemical Dosing Systems incorporating Dosing pumps and accessories to suit customer specifications. We can also offer pumps, fire rated equipment, product metering or equipment to any customer specification required.

The Quotation Process

Working from a Material Safety Data Sheet (MSDS), Tuffa UK can produce a tank solution which will suit the nature of the product.

Major chemical suppliers offer guidelines regarding the safe storage and handling of their products and Tuffa Tanks work closely with these companies to ensure that our systems satisfy their recommendations. By standardising designs around the economical use of materials, manufacturing costs are minimised.

Our bespoke concept allows us to tailor make tanks for the particular storage characteristics of the product to take into account chemical resistance, temperature requirements and site conditions. In order for us to offer a quote for your Chemical Storage Tank Solution, please email a MSDS to sales@tuffa.co.uk. As soon as this information has been received we will be able to prepare your quote.

Example Applications

The Tuffa® Chemical Tank range is suitable to store a variety of Chemicals including AdBlue, De-Icer, Anti-freeze, Sodium Hypochlorite and more. Examples of Chemical Tanks Tuffa have supplied previously:

- AdBlue
- Ammonia Solutions
- Anti-Freeze
- Battery Acid
- Calcium Chloride
- Calcium Nitrate
- Caustic Soda
- De-Icer
- Detergents
- Ferric Chloride
- Ferric Sulphate
- Hydrochloric Acid
- Hydrogen Peroxide
- Nitric Acid
- Phosphoric Acid
- Sodium Hypochlorite
- Sulphuric Acid

** Note: The compatibility of a Chemical with our products is looked at with each and every enquiry. The compatibility is subject to the concentration of the Chemical. A Material Safety Data Sheet (MSDS) is required in order to provide confirmation of compatibility.

“Help to keep planes off the ground with Tuffa De-Icer Tanks”



Range Summary

Tank	Capacity (litres)	Length (mm)	Width (mm)	Diameter (mm)	Height (mm)	Weight (kgs)
1350SLB/Chemical	1350	2680	870	-	1665	220
1400VB/Chemical	1400	-	-	1585	1740	180
2500HB/Chemical	2500	2840	1520	-	1630	290
3500VB/Chemical	3500	-	-	2034	2520	370
6000VB/Chemical	6000	-	-	2580	2610	430
10000VB/Chemical	10000	-	-	2890	2600	490
15000VB/Chemical	15000	-	-	2860	3500	720

Dosing Systems available: call us for more details



Our market area is diverse and includes tank storage provision for: chemical market, agricultural sector, water authorities, food industry, pharmaceuticals, airlines, oil companies, local government, fire service, Ministry of Defence and more.



CHEMICAL TANK RANGE

TUFFA UK ARE THE ONLY MANUFACTURER PRODUCING LARGE SCALE DE-ICER STORAGE CONTAINERS OUT OF POLYETHYLENE. THE SYSTEM IS DESIGNED TO BE COMPATIBLE WITH THE CHEMICAL STORED TO ENSURE PROLONGED USAGE AND DURABILITY. OVER THE PAST 10 YEARS TUFFA UK'S DE-ICER SYSTEMS HAS BECOME THE FIRST CHOICE FOR AIRLINES AND SERVICE COMPANIES THROUGHOUT EUROPE, WE ARE NOW THE LEADING MANUFACTURER FOR BULK DE-ICER DISTRIBUTION SYSTEMS.

The busy timetables operated by airlines do not allow for grounded aircraft due to poor weather conditions, so efficient defrosting and de-icing of aeroplanes and runways to keep to schedule is imperative. Large quantities of the de-icing agent need to be on hand at the airport to allow instantaneous action for when a drop in temperature occurs.

WE HELP YOU FLY FROM THESE AIRPORTS...



Specification

- 1350 - 100000 Litre capacities
- 0 - 700 Litre per minute Pumps
- Various inlet/outlet connections (camlock/BSP)
- Level Gauges and Leak Detection
- Service & maintenance Valves
- Lockable Equipment cabinet
- Armco Protection Barrier

Benefits

- Manouverable
- Interlink tanks to increase capacity
- Reliable & durable measuring & dispensing equipment
- Bunded tanks to prevent spillage
- Tried and field tested system
- Electronic and Mechanical options available

"HELP TO KEEP PLANES OFF THE GROUND WITH TUFFA DE-ICER TANKS"



STANSTED



GATWICK

HEAR ABOUT US FROM SOMEONE ELSE:

"The sales team at TUFFA UK were very helpful and attentive and their engineering expertise was very impressive. They produced a very competitive and timely solution to our needs."

"As static, fixed tanks are extremely expensive, require bunding, and would need to be positioned and then could not moved, the interim more flexible and lower capital cost solution was to purchase some Tuffa Tanks, as used by Bristol Airport."



MEETING
YOUR EXACT
REQUIREMENTS

No job is too big for Tuffa

OUR STEEL TANKS ARE MANUFACTURED IN-HOUSE BY A TEAM OF HIGHLY SKILLED FABRICATOR WELDERS, AND ARE AVAILABLE IN A RANGE OF COLOURS, CAPACITIES AND THICKNESSES AND ARE MANUFACTURED TO YOUR SPECIFICATION

- MANUFACTURED IN HIGH QUALITY MILD STEEL TO BS EN/10 025
- MANUFACTURED TO BS799 PART 5
- DESIGN VERSATILITY TO SUIT ALMOST EVERY SITE REQUIREMENT
- MINIMUM 110% BUND CAPACITY TO COMPLY WITH REGULATIONS
 - ONLY PREMIUM ANCILLARY EQUIPMENT IS FITTED
 - SERVICEABLE LIFE IN EXCESS OF 30 YEARS (WITH REGULAR MAINTENANCE)
- COMPLIANCE WITH CONTROL OF POLLUTION REGULATIONS
 - NEEDS ONLY SUITABLE HARD STANDING FOUNDATION

MORE INFORMATION AVAILABLE ON OUR WEBSITE WWW.TUFFA.CO.UK

T: 01889 567700

E: sales@tuffa.co.uk

GREAT PRODUCTS, GREAT PRICES, GREAT SERVICE



STEEL TANKS

OUR STEEL TANKS ARE AVAILABLE IN A RANGE OF COLOURS, CAPACITIES AND THICKNESSES. THEY ARE MANUFACTURED TO YOUR SPECIFICATION INCLUDING CRITICAL DIMENSIONS AND FIRE PROTECTION FOR BOTH DOMESTIC AND COMMERCIAL APPLICATIONS. WE ALSO INCLUDE A LOCK FACILITY TO ENSURE A HIGH LEVEL OF SECURITY IS ACHIEVED. STEEL BUNDED OR PLASTIC INNER/STEEL OUTER TANKS ARE AVAILABLE.



Key Benefits

- Manufactured in mild Steel to BSEN/10 025
- Manufactured to BS799 Part 5
- All tanks manufactured from only high quality mild steel
- Design versatility to suit almost every site requirement
- Minimum 110% bund capacity to comply with regulations
- Sizes/capacity to suit clients footprint or site limitations
- Only premium ancillary equipment is fitted
- Serviceable life in excess of 30 years (with regular maintenance)
- Weatherproof
- Space saving
- Compliance with Control of Pollution regulations
- Cuts costly site work
- Needs only suitable hard standing foundation
- Clients own in-house colours can be accommodated on request
- Fully Bunded to comply with Oil Storage Regulations
- All inner tanks and outer bunds pressure tested
- Easily transportable (when empty)
- Sizes/capacities to suit situations

Tanks up to 200,000 litres

STEEL BUNDED TANKS

THE TUFFA® STEEL BUNDED OIL TANK RANGE IS AVAILABLE IN VARIOUS CAPACITIES INCLUDING 1100L, 1500L, 1800L, 2900L, 5300L, 10000L, 15000L, 20000 UP TO 200,000L.

We can accommodate any customer requirements, including one-off and bespoke systems. Furthermore, with our highly skilled fabricator welders you will receive a steel product that will outshine any other.

1100SB

Length: 1750mm
Width: 1000mm
Height: 1000mm
Capacity: 1090 litres
Weight: 500kg
Steel Thickness: 3mm

1500SB

Length: 1830mm
Width: 1100mm
Height: 1100mm
Capacity: 1560 litres
Weight: 650kg
Steel Thickness: 3mm

1800SB

Length: 1750mm
Width: 1220mm
Height: 1220mm
Capacity: 1880 litres
Weight: 775kg
Steel Thickness: 3mm

2900SB

Length: 2500mm
Width: 1250mm
Height: 1250mm
Capacity: 2920 litres
Weight: 950kg
Steel Thickness: 3mm

5300SB

Length: 3000mm
Width: 1500mm
Height: 1500mm
Capacity: 5300 litres
Weight: 2000kg
Steel Thickness: 3mm

10000SB

Length: 3600mm
Width: 1830mm
Height: 1830mm
Capacity: 10000 litres
Weight: 2500kg
Steel Thickness: 3mm

15000SB

Length: 3000mm
Width: 2500mm
Height: 2500mm
Capacity: 15300 litres
Weight: 5500kg
Steel Thickness: 6mm

20000SB

Length: 4000mm
Width: 2500mm
Height: 2500mm
Capacity: 20800 litres
Weight: 6500kg
Steel Thickness: 6mm

STEEL FIRE PROTECTED TANKS

900SBFP / 30 900SBFP / 60

Length: 1700mm
Width: 800mm
Height: 1250mm
Capacity: 900 litres
Weight: 500kg

1100SBFP / 30 1100SBFP / 60

Length: 2000mm
Width: 1000mm
Height: 1100mm
Capacity: 1100 litres
Weight: 650kg

1400SBFP / 30 1400SBFP / 60

Length: 2000mm
Width: 1250mm
Height: 1100mm
Capacity: 1400 litres
Weight: 775kg

1640SBFP / 30 1640SBFP / 60

Length: 1900mm
Width: 1250mm
Height: 1250mm
Capacity: 1640 litres
Weight: 800kg

2300SBFP / 30 2300SBFP / 60

Length: 2500mm
Width: 1250mm
Height: 1250mm
Capacity: 2300 litres
Weight: 950kg

4500SBFP / 60

Length: 3000mm
Width: 1500mm
Height: 1500mm
Capacity: 4500 litres
Weight: 1500kg

8700SBFP / 60

Length: 3600mm
Width: 1830mm
Height: 1830mm
Capacity: 8700 litres
Weight: 2200kg



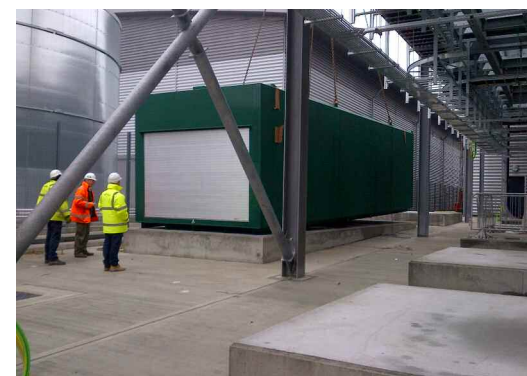
SEE PAGE 09 FOR FURTHER DETAILS

Features

- 2" BSP Fill Point complete with cap and chain located on top of the tank
- Vent
- Gauge: Visual Float Gauge
- 1" BSP Bottom Outlet.
- Overfill Prevention Valve
- Channel Runners (these will increase the tank height)
- Lifting Lugs
- Paint Specification- Euroguard Primer Finish as standard in Green (other colours available)
- CABINET: Available as an optional extra; various types available.
- Tank Pack (1" - 1/2" adaptor, ball valve and filter)

Optional Extras

- Lockable Fill Point
- Fire Protection
- Higher Accuracy Contents Gauge
- Electronic Remote Reading Gauge
- High Accuracy Contents Gauge & Bund and Overfill Alarm Unit, 240V (Tuffa FMS)
- Security Fill Point Cabinet with lockable hinged door
- Various other colours available



STEEL DISPENSING TANKS

THE TUFFA® STEEL FUEL STATION RANGE IS AVAILABLE IN VARIOUS CAPACITIES INCLUDING 1100L, 1400L, 1800L, 1940L, 2900L, 5250L, 10000L, 15000L, 20000L UP TO 200,000L.

1100SBFS Length: 1750mm Width: 1000mm Height: 1000mm Capacity: 1090 litres Weight: 500kg Steel Thickness: 3mm	1400SBFS Length: 1830mm Width: 1100mm Height: 1100mm Capacity: 1451 litres Weight: 650kg Steel Thickness: 3mm	1800SBFS Length: 1750mm Width: 1220mm Height: 1220mm Capacity: 1880 litres Weight: 775kg Steel Thickness: 3mm	2900SBFS Length: 2500mm Width: 1250mm Height: 1250mm Capacity: 2920 litres Weight: 950kg Steel Thickness: 3mm
5300SBFS Length: 3000mm Width: 1500mm Height: 1500mm Capacity: 5300 litres Weight: 2000kg Steel Thickness: 3mm	10000SBFS Length: 3600mm Width: 1830mm Height: 1830mm Capacity: 10000 litres Weight: 2500kg Steel Thickness: 3mm	15000SBFS Length: 3000mm Width: 2500mm Height: 2500mm Capacity: 15300 litres Weight: 5500kg Steel Thickness: 6mm	20000SBFS Length: 4000mm Width: 2500mm Height: 2500mm Capacity: 20800 litres Weight: 6500kg Steel Thickness: 6mm

Features	1100	1400	1800	2900	5200	10000	15000	20000
240V Submersible Pump. (Approx 60lpm)	*	*	*	*	*	*	*	*
4 metres of Delivery Hose	*	*	*	*	*	*	*	*
Automatic Shut off Nozzle	*	*	*	*	*	*	*	*
Nozzle Parker	*	*	*	*	*	*	*	*
Digital Flowmeter	*	*	*	*	*	*	*	*
10 micron Filtration – particulate only	*	*	*	*	*	*	*	*
Contents Gauge: Visual Float Gauge	*	*	*	*	*			
High Accuracy Contents Gauge & Bund and Overfill Alarm Unit (Tuffa FMS)						*	*	*
Overfill Prevention Valve	*	*	*	*	*	*	*	*
2" Fill Point	*	*	*	*	*	*	*	*
Ventilation	*	*	*	*	*	*	*	*
Lockable Security Cabinet	*	*	*	*	*	*	*	*
Channel Runners	*	*	*	*	*	*	*	*
Lifting Lugs	*	*	*	*	*	*	*	*



Optional Extras

- Walk-in Cabinet
- High Accuracy Contents Gauge & Bund and Overfill Alarm Unit (Tuffa FMS)
- Key Switch
- Locking Fill Cap with 2 keys
- Extra Length Delivery Hose
- High Flow Pump (Approx. 80lpm)
- 10micron Water & Particulate Filter
- Armco
- Hose Reels
- Flowmeter Pulse Output- for connection to existing Fuel Management
- Fire Protection
- Also available: Various colours, split compartments, calibrated gauges and more.

Our steel tanks are available in a range of colours, capacities and thicknesses. They are manufactured to your specification including critical dimensions and Fire Protection for both domestic and commercial applications. We also include a lock facility to ensure a high level of security is achieved. Steel bundled or plastic inner/steel outer tanks are available.

STEEL RANGE SUMMARY

Bunded Tanks - Standard						
Tank	Capacity (litres)	Length (mm)	Width (mm)	Height (mm)	Weight (kgs)	Steel Thickness (mm)
1100SB	1110	1750	1000	1000	500	3
1500SB	1560	1830	1100	1100	650	3
1800SB	1880	1750	1220	1220	775	3
2900SB	2920	2500	1250	1250	1000	3
5300SB	5300	3000	1500	1500	2000	3
10000SB	10000	3600	1830	1830	2500	3
15000SB	15300	3000	2500	2500	5500	6
20000SB	20800	4000	2500	2500	6500	6

Dispensing Tanks - Standard						
Tank	Capacity (litres)	Length (mm)	Width (mm)	Height (mm)	Weight (kgs)	Steel Thickness (mm)
1100SBFS	1090	1750	1000	1000	500	3
1400SBFS	1451	1830	1100	1100	650	3
1800SBFS	1880	1750	1220	1220	775	3
2900SBFS	2920	2500	1250	1250	1000	3
5300SBFS	5300	3000	1500	1500	2000	3
10000SBFS	10000	3600	1830	1830	2500	3
15000SBFS	15300	3000	2500	2500	5500	6
20000SBFS	20800	4000	2500	2500	6500	6

Client Case Study: Tuffa manufacture 183000L tank for National Haulage Company

Tuffa UK were delighted to have received a very large order from a national haulage company based in Cheshire. This particular order is for the largest steel tank that Tuffa UK has ever made, totaling a capacity of 180,000 litres.

The client had a re-fuelling island built to allow multiple vehicles to be filled up at the same time to minimise wasted time on site. The fuel island consists of 2x commercial pumps and an additional pump located beside the tank. The tank and pumps have been linked to the client's existing fuel management system on site, as opposed to choosing one of our standard fuel management systems.

The manufacture of this large steel diesel dispensing tank was undertaken by a team of highly skilled and trained steel production staff, and took just 4 weeks.

Upon completion came the requirement of arranging the delivery of this huge tank; something Tuffa were only too happy to assist with. A crane was utilised for loading and off-loading the tank at both ends using a local company, Steve Foster Crane Hire, who managed the 33 tonne lift with ease. The tank was then transported on an escorted specialist articulate vehicle suitable for the job direct to the happy client.



Larger capacities available

PETROL TANK RANGE

THE PETROL TANK RANGE IS AVAILABLE IN VARIOUS CAPACITIES INCLUDING 216L, 330L, 975L, 1250L, 1950, 2500L, 3000L AND LARGER SIZES AVAILABLE ON REQUEST.

The Petrol Tank is the only above ground Petrol Tank that is Fireproofed, specifically designed for petrol and made in England.

The unit is designed for installation at ground level, allowing gravity fed tanker delivery and is fitted with a patented Fire Proofing system.

We can accommodate any customer requirements, including one-off and bespoke systems. Furthermore, with our highly skilled fabricator welders you will receive a steel product that will outshine any other.



Key Benefits

- Our Storage units for Petroleum spirit allow you to store a quantity of Petroleum spirit on your site, delivered by road tanker and avoid the hazards of collecting petrol in jerry cans from your local petrol station.
- The small capacity Caddy units allow you the convenience of filling up at a nearby petrol station and thus avoid the hazards and cost of collecting small amounts of petrol in jerry cans.
- Bunded and Fire Protected storage
- Designed and built in the UK
- Safe and legal petrol storage
- Secure padlock system
- Easy fuel metering
- Fork lift ready
- Hydraulic lid

216Caddy*

Length: 670mm
Width: 670mm
Height: 1300mm
Capacity: 216 litres

330Caddy*

Length: 1450mm
Width: 760mm
Height: 625mm
Capacity: 330 litres

975PT*

Length: 1500mm
Width: 1400mm
Height: 700mm
Capacity: 975 litres

1250PT*

Length: 1800mm
Width: 1500mm
Height: 700mm
Capacity: 1250 litres

1950PT*

Length: 2800mm
Width: 1400mm
Height: 700mm
Capacity: 1950 litres

2500PT*

Length: 2800mm
Width: 1750mm
Height: 700mm
Capacity: 2500 litres

3000PT*

Length: 3200mm
Width: 1750mm
Height: 700mm
Capacity: 3000 litres

Features

216L and 330L models

- Full Fire Protection
- 2" BSP Fill Connection with Cap and Chain
- Hand Operated Reciprocating Pump
- Heavy Duty Tank Lid with Stay for keeping in an open position
- 3.6m Delivery Hose
- Small Manual Nozzle to fit the smallest of machines
- Fork Lift Skids
- Earth Strap and Rod
- Primed and Painted in standard Red

Optional Extras

- ATEX K33 Flowmeter
- 10 micron Filtration - Particulate

975PT / 1250PT / 1950PT / 2500PT / 3000PT

- Full Fire Protection
- 4" BSP Fill Connection with cap and chain
- Hand Operated Reciprocating Pump. (ATEX approved electric pump options)
- Fully Welded Mild Steel Inner Tank with 2" Vent Pipe and 4" Inlet Connection.
- Welded Mild Steel Outer Tank with Bolt on Top, Hinged Lid and Bund Vent.
- Lockable Lid fitted with Stays for keeping in an open position.
- 3.6m Delivery Hose with Manual Nozzle
- Plastic Dipstick with Graduations fitted on top of fill point of inner tank.
- Steel Vent Pipe 4.5m high (off the floor) fitted with flash arrestor.
- Fork Lift Skids with bolt down connections welded to base of outer tank.
- Earth Strap and Rod
- Primed and Painted in standard Green

Optional Extras

- ATEX K33 Flowmeter
- 10 micron Filtration - Particulate
- 12v ATEX Pump- Automatic Shut Off Nozzle
- 240v ATEX Pump- Automatic Shut Off Nozzle

Optional Extras

Training

975L - 3000L Petrol Tanks are easy to use and conform to all British safety requirements. However, care needs to be taken when dispensing and receiving fuel to keep spillages to a minimum. Staff training in the safe dispensing of petrol and the receiving of fuel deliveries plus use of the Record and Delivery books to keep proper records can be arranged if required.

Fire Station

Although all tanks are fully fire proofed, petrol remains a highly flammable substance. There is a statutory duty of care to ensure fire fighting equipment is easily accessible. The Mini Fire Station consists of two dry powder or foam extinguishers and fire bucket containing fire retardant material on a mobile unit.

Spill Kit

Areas where petrol is handled or stored should be provided with a means of controlling spills to prevent spreading to non-hazardous areas. A very effective solution consisting of a large, clearly labelled, 240 litre wheeled bin containing 8, 3 metre 'socks' filled with absorbent material plus 6 bags of loose absorbent material.



Bunded & fire proof



Designed and built in the UK



Safe and legal petrol storage

Range Summary

Tank	Capacity (litres)	Length (mm)	Width (mm)	Height (mm)
216 Caddy	216	670	670	1300
330 Caddy	330	1450	760	625
975 PT	975	1500	1400	700
1250 PT	1250	1800	1500	700
1950 PT	1950	2800	1400	700
2500 PT	2500	2800	1750	700
3000 PT	3000	3200	1750	700



Suitable for any Industry, including:

Tool Hire Shops, Scrap yards, Race courses, Golf clubs, Forestry, Sailing Clubs, Marine services, Yacht clubs, Construction, Allotments, Fire Service, Sports centre, Colleges, Schools, Farms, Country Estate/Gardens, Local Authorities, Factory's, Police Stations, Car dealerships, Outdoor pursuits + many others

*Images are for illustrative purposes and the design is subject to change





1. Tank Stand

Tuffa can design and manufacture Tank Stands to suit your exact requirements.

- Bespoke sizes; made to measure so that the stand fits your tank perfectly
- Manufactured to support the weight of your tank.
- Built to last.
- Various colours available.



2. Conical Bottom Tank

Cone Bottom Tanks are suitable when a complete drain out of the stored liquid is required (total evacuation). Suitable for indoor and outdoor installations. Tanks require stands to support the conical bottoms. Tanks are manufactured from medium - or high-density polyethylene with U.V. inhibitors and designed for containment of liquids of up to 1.7 specific gravity. Tank walls are translucent for level viewing (Natural Only) and are suitable for use as a molasses tank.

- Drains the Entire Selection of Chemicals Out of the Tank
- Can See Into the Tank to View the Liquid Level
- Prevents Tanks from Fading
- Can be Easily Installed in Various Locations Indoors
- Also Capable of Being Stored Outdoors

Diameter: 1210mm
Height: 2125mm
Capacity: 1500 litres



3. Armco Protection Barrier

Tuffa have introduced the Armco Protection Barriers to provide extra security and protection to the unit it contains.

- Provide the ultimate protection for your Tuffa Tank.
- Can be fitted to any Tuffa Tank no matter how small or large.
- Conforms to PPG2 guidelines; the Guidelines state that tanks must be protected against impact damage.



4. Dished Bases

Dished ends from Tuffa are manufactured from only premium quality steel.

Manufactured in a range of specifications, the dished ends are suitable for agricultural and commercial applications such as slurry tankers or oil tankers.

- Bespoke sizes; made to measure so that the stand fits your tank perfectly
- Manufactured to support the weight of your tank.
- Built to last.
- Various colours available.



5. Transportable Products

Our Transportable Bunded Tanks are available in a range of capacities to suit most fuel storage and transportation requirements.

- Made to Order to suit your exact requirements
- Fitted with lifting eyes and forklift pockets make the tanks easily movable.
- Robust steel construction ensures a secure, durable, legal tank.
- All pumps / connections / hoses are housed and can be locked within the bund.



5. Ladder and Platform Access

Equipment designed to make low level access both easier and safer.

The image below displays two 15000 litre bunded tanks with ladder and platform access being constructed whilst on site.



CALL OR EMAIL US NOW WITH YOUR BESPOKE REQUIREMENTS

TEL: 01889 567700
EMAIL: SALES@TUFFA.CO.UK

6. Galvanised Tanks

Galvanising of our Tuffa Steel Tanks is just one of many options available.

- Low Cost
- Less Maintenance
- Long Lasting
- Reliability
- Tough Coating



5. Plastic and Steel Combination Tanks

Client Case Study: Tuffa Manufactures Mammoth Steel Tank for Overseas

A mammoth steel tank weighing in at 18 tonnes left the factory of Tuffa Tanks in Uttroter and made its way to a large well-known logistics company overseas. The Steel Tank measured up at 12000mm (L) x 2700mm (W) x 2500mm (H) and consisted of a 47,000 litre and 10,000 litre compartment, suitable to store Diesel and AdBlue respectively.

The tank, known in-house as the giant "Battenberg" because of its striped Fire Protected inner tank, was manufactured in just 8 weeks by Tuffa's team of highly skilled staff.

The Plastic AdBlue compartment (10000V) incorporated specialised equipment suitable for the aqueous solution, and was manufactured to AUS32 guidelines. The Steel Diesel compartment was complete with a full dispensing system complete with a higher output pump in order to save the client time and money by providing vehicles on site with a system built to fill up fast.

The tank was finished with smart decal and given a superb White finish, of which is the client's corporate colour.



THE TUFFA FUEL MANAGEMENT SYSTEM



The management system allows vehicle data storage of fuel used with date, time and user information logged on web based software allowing features for vehicle performance on miles / kilometres per litre.



The brand new units combines innovative design and incredible function. The FMS is an all in one monitoring system that is one of a kind. The Fuel Management feature is an add-on to the base system, which can use SMS, GPRS and web based technology allowing multiple ways of monitoring.



A combined digital tank level indicator and bund and overfill alarm unit that is designed to provide visual and audible alarms whenever a predetermined level in a storage tank is reached. It also gives a contents readout in both litres and a percentage and can be pre-configured for Derv, Gas Oil and AdBlue with the option for self-calibration of other liquids.

What's more the FMS also has a theft monitoring system, ideal for helping to prevent the theft of your supplies.



COMING SOON!

TUFFA ACCESSORIES

If you are looking for automatic shut off nozzles, filters, hose reels, pumps, flowmeters, gauges or fuel management systems then look no further. Should you not find what you are looking for please call our friendly sales team who are at hand to help you with your specific requirements.



SECURITY OPTIONS



Spin Secure Locking Fill Cap
Description: A locking device to fit any Tuffa Tank. It does not require a padlock, eliminates "crow-bar" access and is complete with 3 keys.



Locking Man Lid
Description: A padlock facility can be added to all larger models at the top access point.



Security Light
Description: A PIR light cabinet be fitted to any Tuffa Tank inside the cabinet/lid or externally.

CONTENTS GAUGES

Fuel Level sensors are a convenient way of monitoring the level of oil in your tank to prevent you from running out. Please browse the most popular gauges below, and should you have a requirement for another type of gauge please call our friendly sales team to discuss.



Visual Clock Gauge
Description: Float Level Gauge available in various sizes, this gauge provides a simple rough indication of tank contents and shows EMPTY 1/4, 1/2, 3/4 or FULL, and has an accuracy of +/- 5% (approx).



Tuffa Fuel Monitoring System (FMS)
Description: The Fuel Level Monitoring System is a combined high accuracy tank level indicator and bund and overfill alarm that is designed to provide both visual and audible alarms whenever a predetermined level in a storage tank is reached. It also gives a content readout in both litres and a percentage and can be pre-configured for Derv, Gas Oil and AdBlue with the option for self-calibration of other liquids. This FMS unit is fitted to all larger dispensing tanks (3500+) models as standard.



Watchman Remote Reading Gauge
Description: An electronic oil level sensor remotely monitors the level of oil in the tank. A green transmitter is fitted to the top of the oil tank and an ultra sonic level measurement is transmitted to a level sensor receiver. This information is accessed via the receiver which is plugged into an electric wall socket within the home.

FUEL MANAGEMENT

Whether you are looking for a quality low-budget system or a higher specification system, Tuffa can help provide you with whatever Management system you require.



Tuffa Fuel Management System (FMS)
Description: The Tuffa FMS unit combines innovative design and meticulous function to give a robust and reliable liquid level monitoring system. Its high accuracy readings will give the user a clear picture of the tanks contents and its GSM technology allows you to check your tank level anywhere or even alert the owner of a theft. Coupled with this system is the added feature of our fuel management system, this system is managed by you from our Web Portal. Create you own account and manage your fleet with a host of innovative features that keep you in charge of your fuel.

COMING SOON

TANK ACCESSORIES



Tank Pack (Bottom Outlet Fittings Kit)
Description: 1" - 1/2" adaptor, ball valve and filter



Key Switch
Description: To enable and disable the submersible pump, with 2 keys. (Fuel Station models 3500+)



AVAILABLE FOR ALL YOUR DEVICES

WE USE ONLY PREMIUM QUALITY PRODUCTS



FILTRATION

Filtration is essential to maintain an efficient installation and ensure that important components are protected from ingress damage.

Tuffa are able to offer a variety of filters which include: 10micron, 30micron, Particulate only, Water and Particulate, High Flow and more.

Particulate Filters

Description: Available in two flow rate ranges (69lpm or 100lpm) these low cost filter units provide particulate filtration down to 10 micron, eliminating the risk of vehicle damage from solid contaminants.



10micron Filter - Particulate (69lpm)

Description: Fitted to all Diesel tank models as standard.



10micron High Flow Filter - Particulate (100lpm)

Water & Particulate Filters

Description: Providing simultaneous water detection and particulate removal the range of water and particulate fuel filters are an ideal solution to most commercial transfer applications ensuring that fuel quality does not compromise your fleets' performance. Water & Particulate filtration is available in either 30 or 10 micron.



10micron Filter - Water and Particulate (up to 70lpm)



10micron High Flow Filter - Water and Particulate (up to 120lpm)

TUFFA TANK HOSE REEL OPTIONS



Hose Reel - Various lengths

Description: Self-retracting, steel construction. Reels are available in mild steel and stainless steel, and are suitable for use with Diesels, Petrol, AdBlue and Chemicals.

FLOWMETERS

We sell a wide range of mechanical, pulsed and digital fuel meters and oil flow meters suitable for most common fuel types including: Diesel meter, Biodiesel, Kerosene, Petrol, AdBlue etc, as well as for oil and grease metering applications.

We stock a huge range of meter models including diesel meters and can provide a fuel meter, oil flow meters for most applications, including high accuracy, low flow, high pressure, battery powered, low cost, to name but a few. See below the meters fitted to Tuffa Tanks as standard.



Digital Flowmeter - Diesel

Description: This Turbine Digital Flowmeter is suitable for use with diesels and is fitted to all Diesel tank models. Flow rate: 10-100lpm. Inlet/Outlet: 1"



Digital Flowmeter - AdBlue

Description: This Turbine Digital Flowmeter is suitable for use with AdBlue and is fitted to all AdBlue tank models. Flow rate: 10-100lpm. Inlet/Outlet: 1"

SUBMERSIBLE PUMPS

Our fuel delivery pumps are of the highest quality and we can supply our fuel pumps throughout the UK and worldwide. We offer a wide selection of pumps suitable for various fuels and oils.



Submersible Pump (approx. 40lpm)

Description: A submersible pump suitable for both diesels and AdBlue. Flow rate: 40lpm approx. Suitable for use with diesel or biodiesel up to B100, AdBlue or clean water.



Submersible Pump (approx. 60lpm)

Description: A fully stainless steel submersible pump designed for diesel, AdBlue and chemicals (with a flashpoint < 55°) Flow rate: 60lpm approx. Suitable for use with diesel or biodiesel up to B100, AdBlue or clean water.



Submersible Pump (approx. 80lpm)

Description: A submersible pump suitable for diesels. Flow rate: 80lpm approx. Suitable for use with diesel or biodiesel up to B100, AdBlue or clean water.

FAQS

Frequently Asked Questions

Question: Are Tuffa Oftec Registered?

Answer:

Tuffa UK's tanks have been tested to Standard:prEN13341:2008 and in addition to this tested under the Oftec Fuel Storage Tank Test scheme and conforms to the Requirements for Tanks as set out in OFTEC OFS T 100: Issue 6 July 2008.

Tuffa's Fire Protected Tank Range:

- Independently tested to BS476: Part 22: 1987
- Independently tested to BS476 (Warrington Fire Research Centre)
- Meets Section J 5.4 of Building Regulations, Table 5.1 for Fire Protection for Oil Storage Tanks
- LABC (Local Authority Building Control) system approval

Question: Is a single skin or a Bunded Tank required?

Answer:

In all cases a risk assessment should be carried out by a suitable qualified engineer.

If the following apply then a bunded oil tank is to be installed:

- Tank capacity in excess of 2500 litres
- Tank within 10m of controlled water
- Tank located where a spillage could run into an open drain or to a loose fitting manhole cover
- Tank within 50m of a borehole or spring
- Tank over hard ground or hard-surfaced ground that could enable spillage run-off to reach controlled water
- Tank located in a position where the vent pipe outlet is not visible from the fill point
- Tank supplying heating oil to building other than a single-family dwelling

Question: What is a Bunded Oil Tank?

Answer:

A bunded oil tank is a double walled tank or a tank within a tank. The inner tank stores the oil and the outer tank acts as a bund which encases the inner tank. The outer tank holds 110% of the capacity of the inner tank. If there is a spill or leak from the inner tank it's captured in the outer tank so avoiding groundwater pollution.

Question: What is an Integrally Bunded Oil Tank?

Answer:

An integrally bunded tank is an outer tank which is normally attached to the inner tank to rely on the inner tanks build characteristics for additional design support and strength.

Question: What is a Double Skinned Tank?

Answer:

A double skinned tank is a type of tank manufactured by some companies. This is where the outer tank is laid directly on the inner tank (two skins). To obtain structural strength on the outer tank a method is to support it externally or to drill holes in the outer plate and fillet weld the inner to the outer plate filling the hole in again. Some tanks manufactured like this have no secondary containment of 110%, unless additional space has been added to the outer skin to allow for this.

Question: What type of base is required for the Tank?

Answer:

The tank must be completely supported on a non-combustible base and the base must extend 300mm around the footprint of the tank.

Question: How can I maintain my Oil Storage Tank?

Answer:

If you want some helpful tips and advice regarding the maintenance of your Oil Storage Tank / Tanks, then refer to Tuffa's Tank Inspection and Maintenance Guidelines for the best advice. Refer to page 42.

Question: What liquids can be stored in a Tuffa Tank?

Answer:

The range of Tuffa Tanks cover storage for many liquids including: Oils, Petrol, Rain Water, Potable Water, Biodiesel, AdBlue or Urea, various Chemicals including Antifreeze and De-icer, Molasses, Waste Oils, Diesels, Lubricants and more.

Question: Do Tuffa offer a delivery service?

Answer:

Yes. Tuffa use a variety of outsourced haulage companies in order to bring you the competitive prices you see. Tuffa are able to offer a nationwide service, as well as deliveries overseas.

If off-loading is required, Tuffa are able to offer a hiab off-load facility or crane off-load to save you the hassle.

Question: What is the lead time / availability of a Tuffa Tank?

Answer:

This is dependent upon the model of the Tuffa Tank. However, we always endeavour to work to and meet your specific requirements. Typically, the lead time of a plastic Tuffa Tank is 5-7 days.

Question: What is Fuel Monitoring?

Answer:

Fuel monitoring is where the level of the fuel is being obtained either by:

- a.) Sight: This can be a sight tube that runs to the top of the tank (small tanks normally), or cat and mouse gauges.
- b.) Mechanically Pneumatic: Pneumatic reading gauges (hydrostatic), where fuel is displaced from a tube and the resultant back pressure formed by the head of oil gives a reading on a gauge.
- c.) Electronically: This can be various systems, as above, giving either analogue or digital readings

Question: What is Fuel Management?

Answer:

Fuel management is where the above, plus some form of registering what fuel is taken from the storage vessel, normally through a flow meter. Where a record is taken and noted of the fuel used; there are many systems that electronically store this information and can be viewed on a computer system or a web application.

Query: How far away does the Tank have to be from a boundary?

Answer:

1.8m from an opening, and 0.76m from a boundary. However, these regulations do not apply to a Tuffa Fire Protected Tank.

Query: What guarantee do I get with my Tuffa Tank?

Answer:

Please contact the Tuffa Sales Team to find out more about the guarantee periods available with a Tuffa Tank.

Query: What are the benefits of a Plastic Tuffa Tank?

Answer:

- Competitively Priced
- Lightweight and durable
- Easily Transportable
- The Bunded construction offers protection from leakage and overfilling
- Covered Bund prevents the collection of rainwater and debris
- Fully lockable tanks
- Corrosion resistant
- UV stabilised
- Quick dispatch
- Can be interlinked to obtain larger capacities
- Various colours available
- Made from virgin material, which is recyclable.
- Can be factory fitted with our bespoke Fire Protection

Query: What are the benefits of a Steel Tuffa Tank?

Answer:

- Can be manufactured to any dimensions to suit all customer requirements
- All tanks manufactured from only high quality steel
- Design versatility to suit almost every site requirement
- Minimum 110% bund capacity to comply with regulations
- Only premium ancillary equipment is fitted
- Serviceable life in excess of 30 years (with regular maintenance)
- Various colours available
- Available in a variety of steel finishes
- Can be factory fitted with our bespoke Fire Protection

Question: What can I do to secure my tank?

Answer:

A few simple steps to help deter fuel thieves:

- Screen your tank with fencing or hedges
- Ensure gates or access to the tank are closed and fully secure at all times
- Conceal/cover any external pipes and fuel lines
- Install PIR security lights to the tank. CCTV is also a good deterrent
- Install lockable fill caps with padlock
- Consider installing a tank alarm
- Join a Neighbourhood Watch scheme
- Regularly check the level of fuel within the tank.

Images show the basic set up of the smaller range of Tuffa Diesel and Tuffa AdBlue tanks (1350 - 2500 models).

TANK INSPECTION AND MAINTENANCE GUIDELINES



This document is produced by TUFFA UK Limited

Authored by R Shenton

INSPECTION AND MAINTENANCE FOR LIQUID STORAGE TANKS, THERMOPLASTIC, THERMOSET AND STEEL TANKS

This document is written in conjunction with HSE Guidance Note PM86

Introduction

This inspection and maintenance of above is for static tanks with a head equal to the height of the product used (i.e. no pressures induced on the tank).

Legal Requirements

The legal requirements of HSE Guidance note PM86 in sections 22 – 27 must be adhered to for all tanks.

Installation

It is deemed that the storage tanks have been installed to the correct procedure by either manufacturer's instructions and guidelines, British Standards BS5410 Parts 1 and 2, and installation guidelines outlined in HSE Guidance note PM86 sections 28 – 36.

Operation and Maintenance

Examination

Tanks in service

Inspection of open bunded tanks

Inspection by Competent Person

Inspections should be undertaken by a competent person that is receiving a delivery of product on every fill prior to and whilst filling.

This inspection should include:

- The fill point arrangement for soundness and leaks
- Any outlet valves should be checked for leaks and operation (open and close successfully)
- The testing of contents gauge, any high level / overfill alarm and bund alarm.
- If vents can be seen that they are clear and unblocked and free of debris.
- A visual inspection around the tank with emphasis on the base of the tank. The inspection for plastic tanks should include any deformation of the surface of the tank i.e. excessive bulging, change in colour due to chemical attack, crazing or stress fractures. The inspection of steel tanks should include looking for evidence of rust and heavy corrosion, damp patches on seams & seam fractures.
- Bund to be visually inspected for soundness and integrity, water, spilt product, or other debris.

Competent Person Not Available

If no responsible person at the point of delivery is available, then the above inspection should be carried at the earliest convenience after filling.

Unmanned Site

If the location of the delivery is unmanned then the delivery driver should be made aware of certain aspects of the inspection requirements above.

The inspection procedure could be used as a record for fitness of purpose for continued use. If the frequency of filling the tank is greater than six monthly, then the above inspection must be carried out and documented accordingly.

Inspection of totally enclosed bunded tanks

Visual inspection of a totally enclosed bunded tank can be difficult due to the close proximity of the inner tank and the bund. A bunded tank must have an alarm fitted and the inspection would indicate that an alarm must be functioning correctly. It is preferential that if the alarm activator can be withdrawn and tested this would be preferred. If an alarm sequence has never been activated this would give signs that the inner tank is still sound.

Design Life Inspection

A design life of a storage tank should be approximately twenty years. For continued use of the storage tank an inspection by:

- a) Removing the tank from bund and inspecting as above
- b) A visual inspection device i.e. a camera can be used for the above

Internal Examination and Cleaning

Internal examinations should be undertaken by a competent person at appropriate intervals, as determined by the product used, and its cleanliness i.e. solids or water falling out of suspension. Entry into confined spaces should be carefully planned and supervised and should be subject to a strict procedures dependent on the substance stored, and in accordance with HSE requirements.

Manufacture Design Considerations

Tanks built after the year 2000 should have been manufactured to the requirements of an appropriate standard such as BS EN 13575, BS EN 12573, BS EN ISO 1778 or BS EN 13341.

Manufacturers should work to an appropriate standard which simplifies quality control and traceability. Would be purchasers should seek advice from the manufacturer regarding a suitable standard for the design and construction of new tanks.

In the case of tanks not manufactured in accordance with a recognised design code at date of manufacture, it is recommended that the tank be assessed against a suitable current standard, by the manufacturer or a competent person, in order to verify its continued fitness for service and purpose.

The user should make sure that the tank being ordered meets all of the design criteria required of it. It is important that users understand what they are purchasing and do not assume that the tank has the required properties and functions. It is of utmost importance that the manufacturer and purchaser understand the design and function requirements in order the tank is designed accordingly, and the purchaser select a reputable manufacturer accordingly.



This document is the property of TUFFA UK Limited and may not be copied without express consent. Copyright laws apply.