

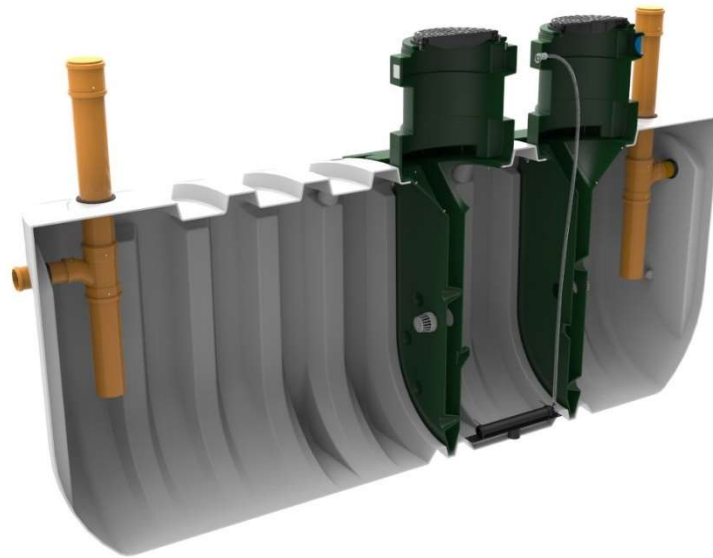
# Harlequin® HydroClear

## SEWAGE TREATMENT PLANT

## HydroClear HC12 Wastewater Treatment Plant

HydroClear represents significant progress for the domestic wastewater treatment industry.

Contemporary design engineering and analysis software and state-of-the-art manufacturing facilities combine to create this unique product which dominates the sewage treatment plant market with class-leading pollutant removal level of 97%.



### Standard Features:

- ◆ Tank body moulded in one piece from durable medium density polyethylene material
- ◆ 110mm inlet and outlet connections
- ◆ Integrated lifting eyes for ease of handling and installation
- ◆ Fully secured 450mm pedestrian duty manhole covers comply with statutory regulations
- ◆ Adjustable turrets allowing for shallower invert levels
- ◆ Above ground air blower housing delivers more reliable and efficient operation, and allows easy access for maintenance
- ◆ Easy access to the bubble diffuser within the tank
- ◆ Virtually silent operation
- ◆ Cost effective installation
- ◆ 24 month service period reduces operating costs
- ◆ HydroClear owners can determine their own de-sludge intervals giving potential cost savings
- ◆ Mechanically reliable with no moving parts or electrics within the tank
- ◆ Certified to EN12566-3

# Harlequin® HydroClear

## SEWAGE TREATMENT PLANT

## HydroClear HC12 Wastewater Treatment Plant

### Optional Equipment:

- ◆ Air blower function alarm
- ◆ Pumped outlet
- ◆ 300mm turret extension piece(s) – max. allowable invert level of 2m

### Technical Data:

	<i>Efficiency</i>	<i>Effluent</i>
<b>Treatment Efficiency</b>	COD	91.2%
	BOD <sub>5</sub>	96.6%
	NH <sub>4</sub> -N	85.8%
	SS	94.7%
<b>Nominal hydraulic daily load</b>	2,400Litres / day	
<b>Nominal organic daily load</b>	720g BODs / day	
<b>Inhabitants served</b>	7 - 12	
<b>Desludging interval</b>	9 months *	
<b>Electrical consumption</b>	2.5 kWh/d	
<b>Power requirements</b>	230V 105W 0.9A (start-up current)	
<b>Volumes (at operational height)</b>	Primary settlement – 3400 Litres Aeration chamber – 1440 Litres Final settlement –1110 Litres	
<b>Overall dimensions</b>	L 4500 W 1400 H 2560 mm	
<b>Standard inlet depth</b>	1090 mm	
<b>Standard outlet depth</b>	1140 mm	
<b>Depth from invert to base</b>	1470 mm	
<b>Depth from base to ground</b>	2560 mm	
<b>Pipe diameter</b>	110 mm	
<b>Net Weight</b>	550 kg	

\* de-sludge interval up to 9 months depending on the number of inhabitants

### Issued By:

Harlequin Manufacturing Limited  
21 Clarehill Road, Moira, Co. Armagh, N.Ireland, BT67 OPB  
T: +44 (0)28 9261 1077  
W: [www.harlequin-mfg.com](http://www.harlequin-mfg.com)  
E: [info@harlequin-mfg.com](mailto:info@harlequin-mfg.com)