

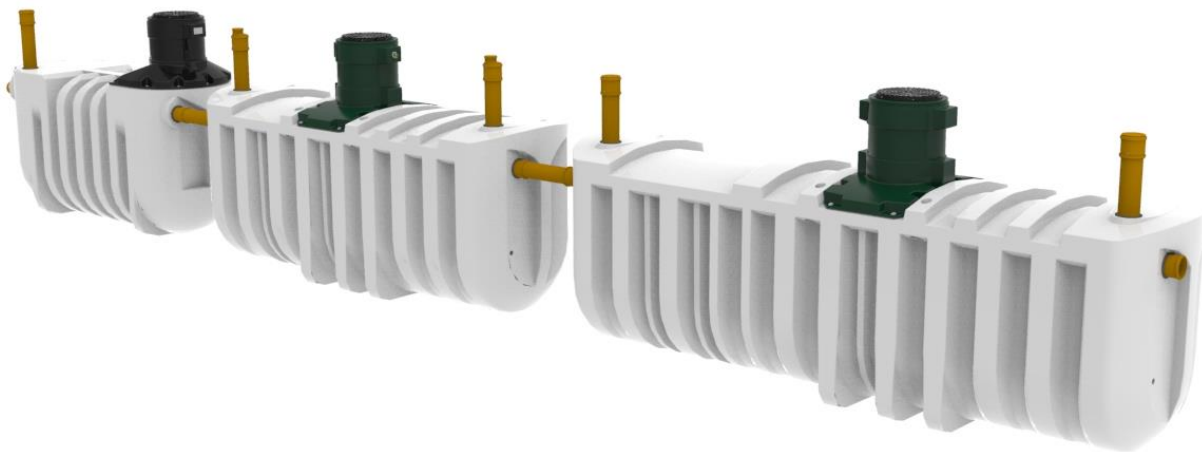
Harlequin® HydroClear

SEWAGE TREATMENT PLANT

HydroClear HC50 Wastewater Treatment Plant

HydroClear represents significant progress for the domestic wastewater treatment industry.

Contemporary design engineering and analysis software and state-of-the-art manufacturing facilities combine to create this unique product which dominates the sewage treatment plant market with class-leading pollutant removal level of 97%.



Standard Features:

- ◆ Tank bodies moulded in one piece from durable medium density polyethylene material
- ◆ 160mm inlet and outlet connections
- ◆ Integrated lifting eyes for ease of handling and installation
- ◆ Fully secured 450mm pedestrian duty manhole covers comply with statutory regulations
- ◆ Adjustable turrets allowing for shallower invert levels
- ◆ Above ground air blower housing delivers more reliable and efficient operation, and allows easy access for maintenance
- ◆ Air blower function alarm
- ◆ Easy access to the bubble diffuser within the aeration tank
- ◆ Virtually silent operation
- ◆ Cost effective installation
- ◆ 24 month service period reduces operating costs
- ◆ HydroClear owners can determine their own de-sludge intervals giving potential cost savings
- ◆ Mechanically reliable with no moving parts or electrics within the tank
- ◆ Certified to EN12566-3

Harlequin® HydroClear

SEWAGE TREATMENT PLANT

HydroClear HC50 Wastewater Treatment Plant

Optional Equipment:

- ◆ Pumped outlet
- ◆ 525mm turret extension piece(s) – max. allowable invert level of 2m

Technical Data:

	<i>Efficiency</i>	<i>Effluent</i>
Treatment Efficiency	COD	91.2%
	BOD ₅	96.6%
	NH ₄ -N	85.8%
	SS	94.7%
Nominal hydraulic daily load	10,000Litres / day	
Nominal organic daily load	3000g BODs / day	
Inhabitants served	41 - 50	
Desludging interval	6 months *	
Electrical consumption	5.8 kWh/d	
Power requirements	230V 240W 2.0A (start-up current)	
Volumes (at operational height)	Primary settlement – 8440 Litres Aeration – 6600 Litres Final settlement – 4650 Litres	
Overall dimensions	Primary settlement – L 5680mm W 1400mm H 2620mm Aeration – L 4500mm W 1400mm H 2620mm Final settlement – L 3400mm W 1250mm H 2620mm	
Standard inlet depth	1000 mm	
Standard outlet depth	1050 mm	
Depth from invert to base	1470 mm	
Depth from base to ground	2470 mm	
Pipe diameter	160 mm	
Net Weights	Primary - 490kg Aeration - 780kg Final settlement - 320kg	

* de-sludge interval up to 6 months depending on the number of inhabitants

Issued By:

Harlequin Manufacturing Limited
21 Clarehill Road, Moira, Co. Armagh, N.Ireland, BT67 0PB
T: +44 (0)28 9261 1077
W: www.harlequin-mfg.com
E: info@harlequin-mfg.com